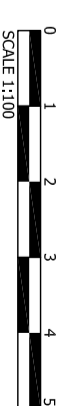
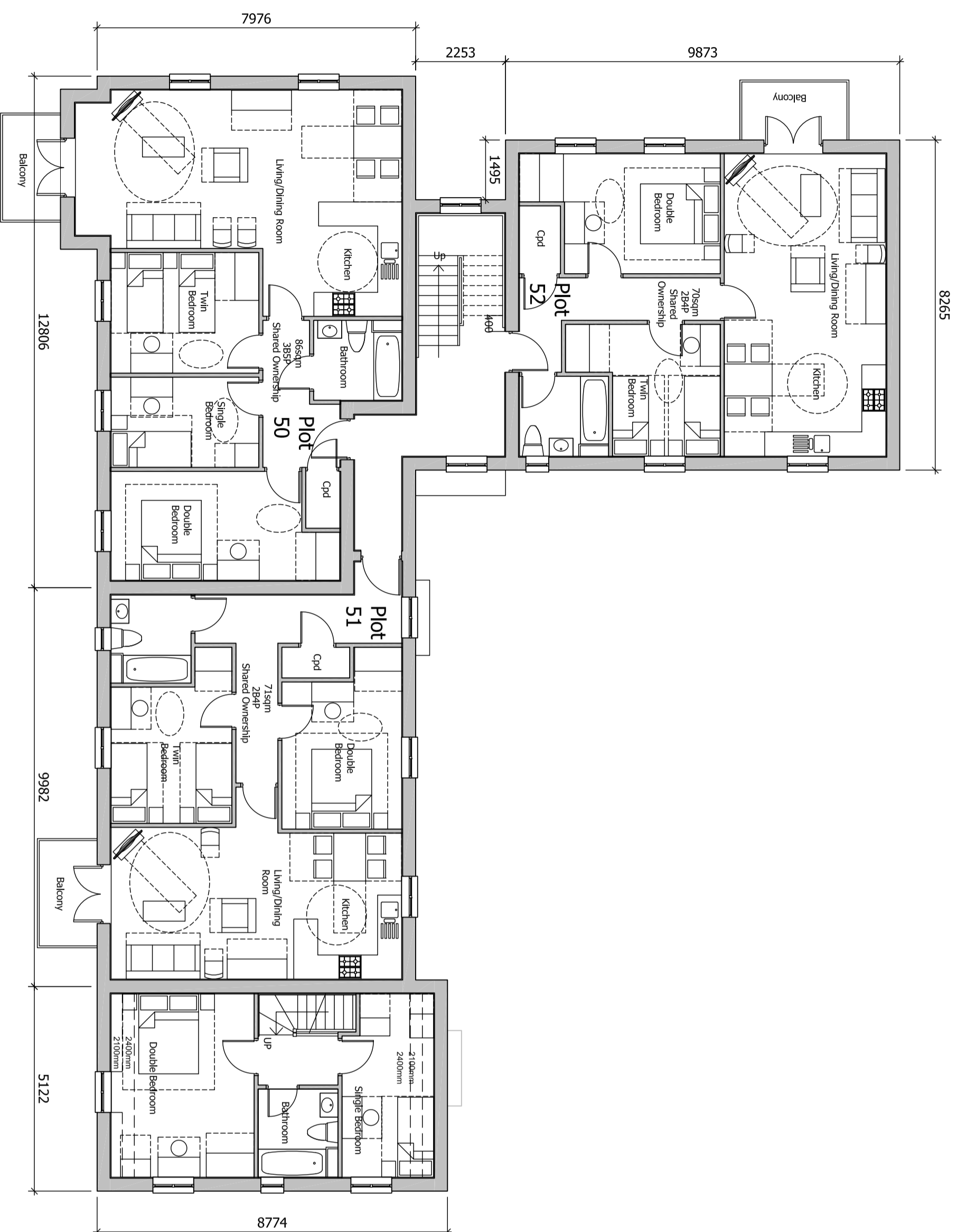


The scaling of this drawing cannot be assured

Revision	Dim	Ckd
- Planning application submission	30.08.19	EM CB
P1 Revisions undertaken to LPA consultation responses and feedback	28.02.20	ROR ST
P2 Juliet balconies removed	08.06.20	ROR PN
P3 Revisions undertaken to LPA comments, building form redesigned to fit within outline parameter plan	00.04.21	ROR PN



PLANNING
 Project
 LAND AT TEVERSHAM ROAD
 FULBOURN

Drawing Title
**APARTMENT BLOCK A
 FIRST FLOOR**
 Date 15.07.19 Scale 1:100@A2 Drawn by WL Check by ST
 Project No 28815 Drawing No 28815-P11-91 Revision P3



Town Planning • Master Planning & Urban Design • Architecture •
 Landscape Planning & Design • Infrastructure & Environmental
 Planning • Heritage • Graphic Communication •
 Communications & Engagement • Development Economics

bartonwillmore.co.uk

Offices at Birmingham, Bristol, Cambridge, Cardiff, Edinburgh, Edinburgh, Glasgow, Leeds, London, Manchester, Newcastle, Reading, Southampton