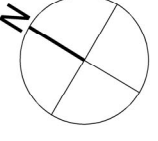
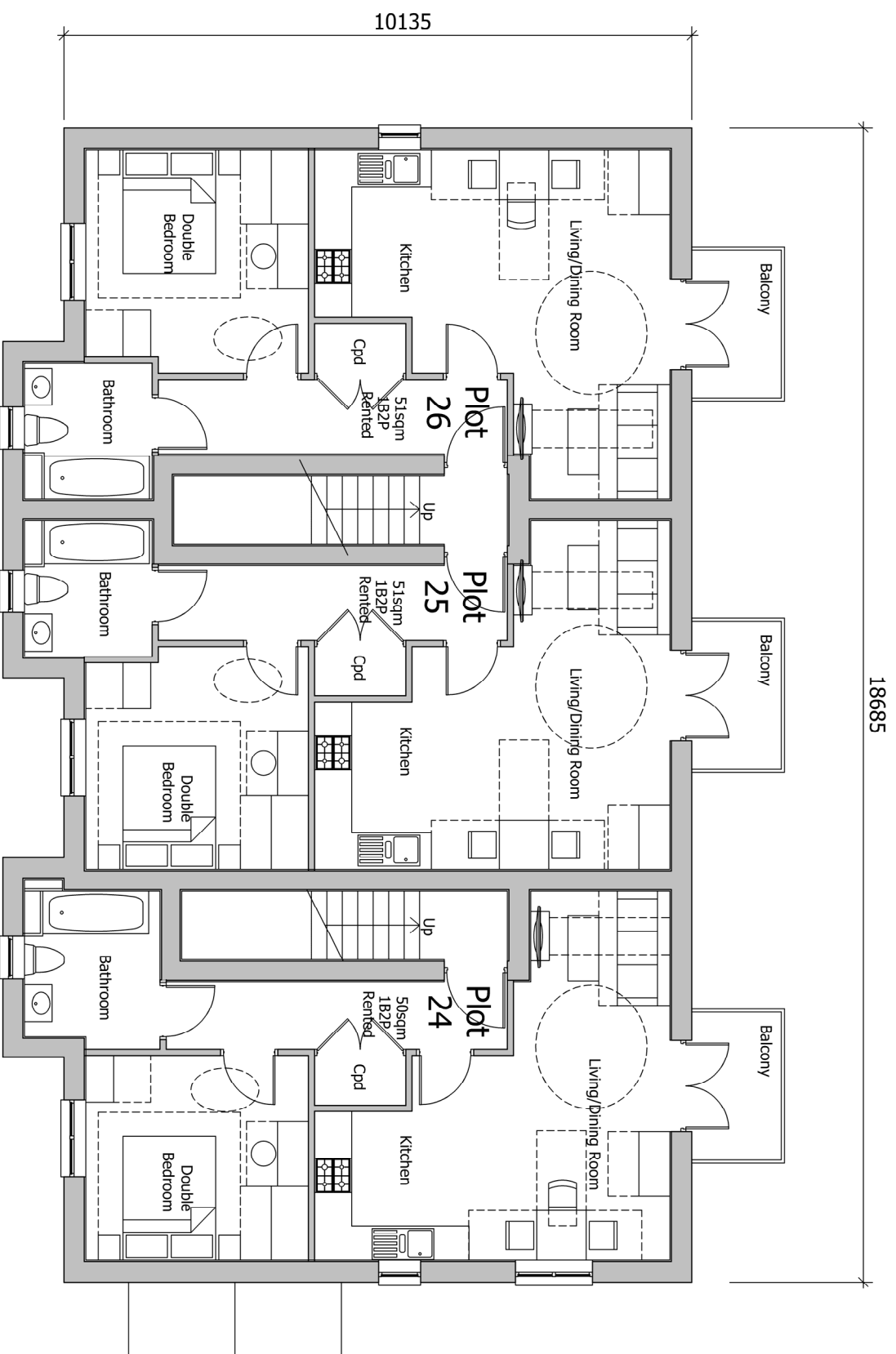


The scaling of this drawing cannot be assured			
Revision	Date	Drn	Ckd
- Planning Application Submission	30.08.19	EM	CB
P1 Revisions undertaken to LPA consultation responses & feedback	28.02.20	ROR	ST



# PLANNING

Project  
**LAND AT TEVERSHAM ROAD  
 FULBOURN**

Drawing Title  
**APARTMENT BLOCK C  
 FIRST FLOOR**

Date	Scale	Drawn by	Check by
15.07.19	1:100@A3	WL	ST
Project No	Drawing No	Revision	
28815	28815-P11-111	P1	



Planning • Master Planning & Urban Design • Architecture  
 Landscape Planning & Design • Environmental Planning • Graphic  
 Communication • Public Engagement • Development Economics

bartonwillmore.co.uk



Offices at Birmingham Bristol Cambridge Cardiff Edinburgh  
 Glasgow Leeds London Manchester Newcastle Reading Southampton