

ONE MILTON AVENUE (S4) BUILDING ENVELOPE



CHOICE OF MATERIALS AND COLOURS

The building materials have been selected to support the masterplan principles and provide a suitably robust solution for the environmental context and the impact of climate change.

Buff brick stock has been selected as an appropriate response to the general Cambridge aesthetic, with two tones of metallic panels selected to enhance the warm palette of materials. The lighter bronze finish has been chosen to mediate between the brick and the glazed areas, whereas the darker bronze finish has been used to highlight key architectural features.



Illustrative view of One Milton Avenue from the north at the junction of Milton Avenue and Milton Walk.

ONE MILTON AVENUE (S4) BUILDING ENVELOPE



APPROACH TO FACADE DESIGN

The elevations for One Milton Avenue have been carefully considered to enforce a strong sense of material identity. The concept has been to evoke a sense of craft and an appreciation for light and shade, through an articulated brick composition.

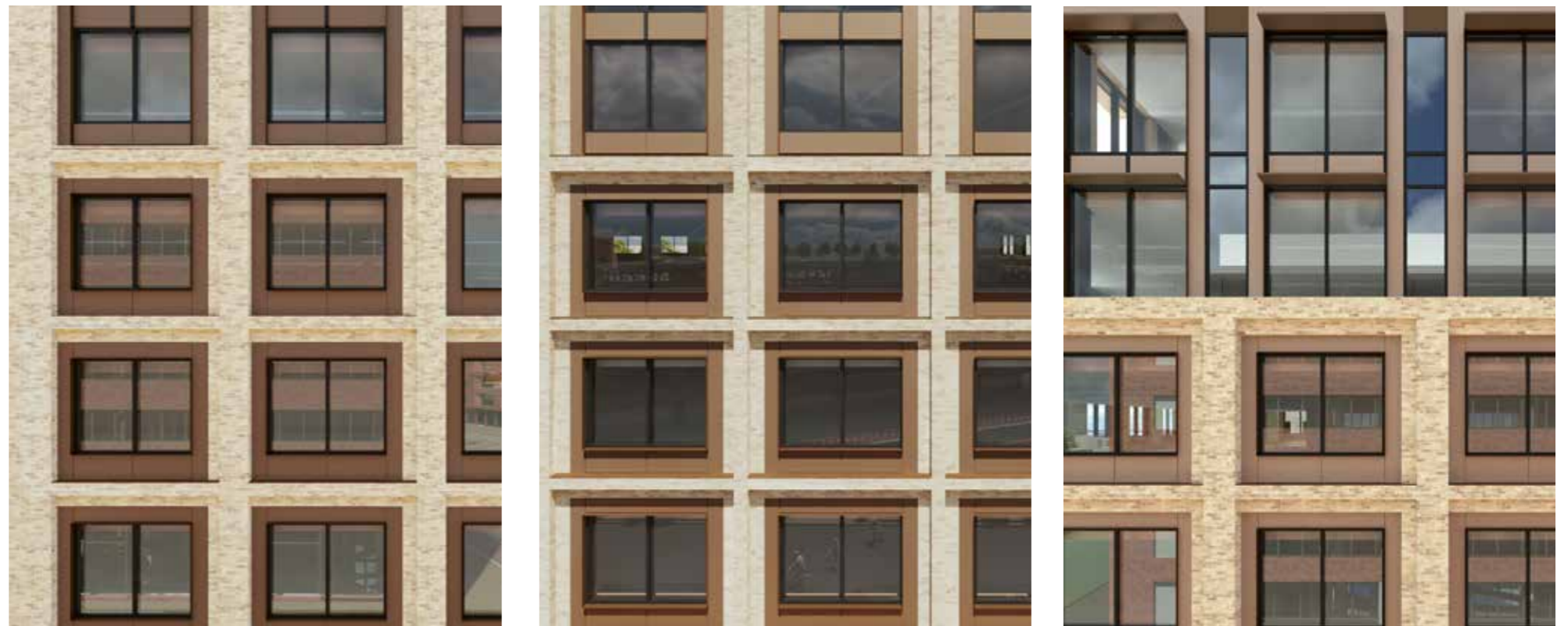
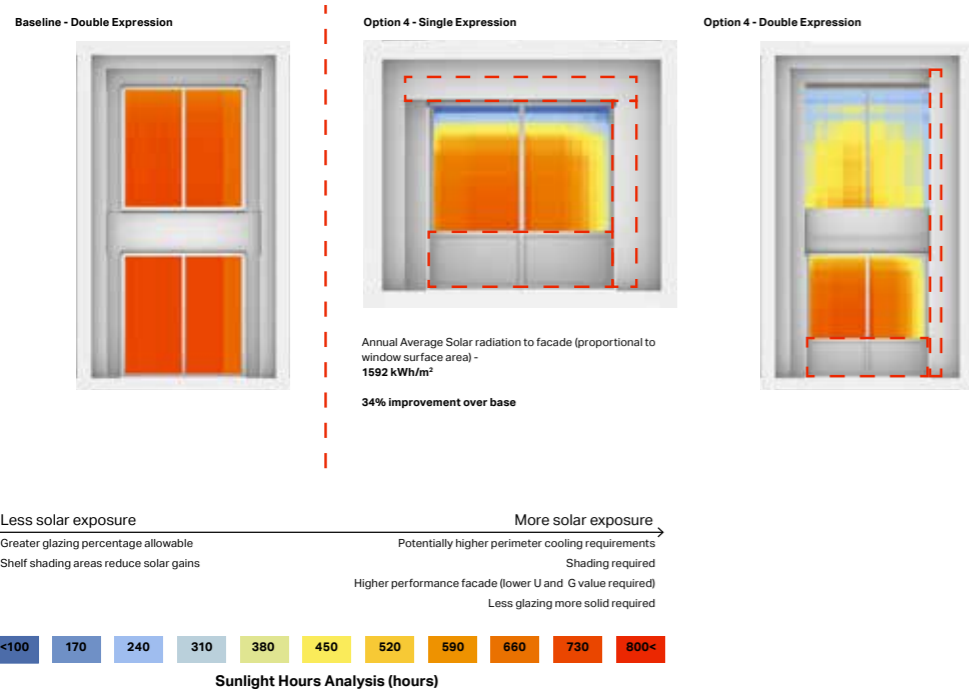
Further, the composition of the brick piers and headers, as well as the location of the windows within the elevational grid, have been tested to provide an optimum degree of natural shading.

Problematic solar gain is also reduced through the inclusion of brise soleil to the upper levels on the key southern and western facades, to provide a highly sophisticated yet passive response to reducing the overall energy demand of the building.



Painting by CV Holsoe, exploring light through window depth.

Terraced upper levels with 'lighter' materiality and massing.



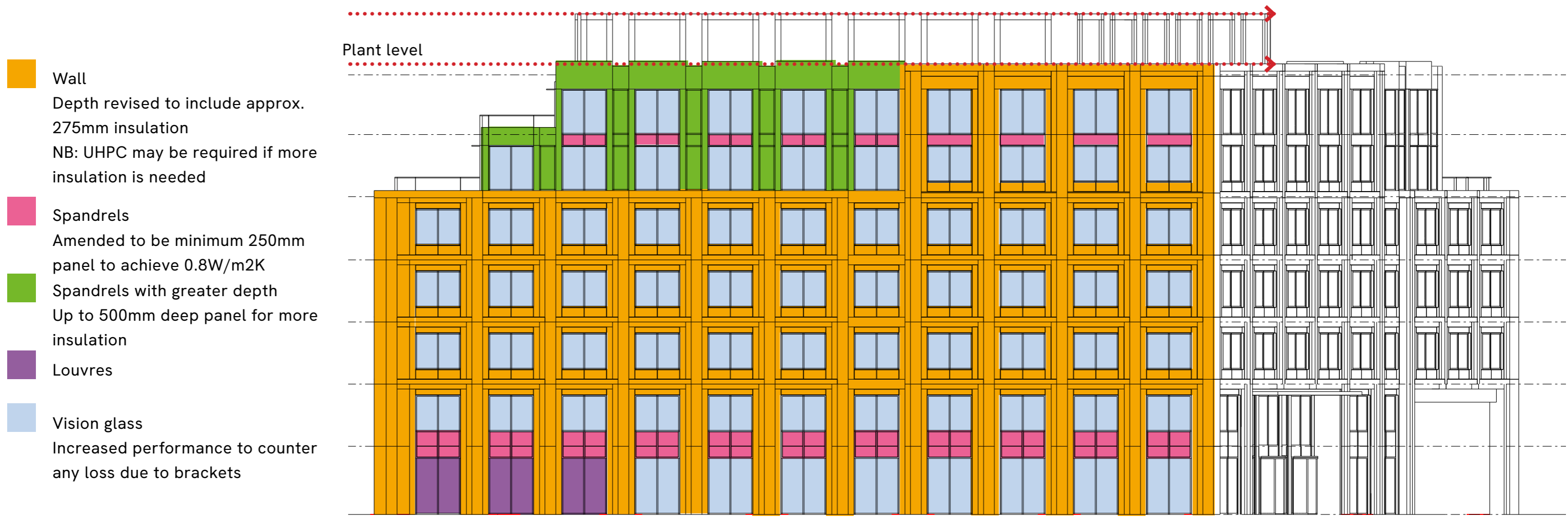
Facade modelling to minimise solar gain.

Facade depths and brick articulation respond to orientation, maximise shading and minimise solar gain across the different elevations.

ONE MILTON AVENUE (S4) BUILDING ENVELOPE

PERFORMANCE AND ENERGY MODELLING

The depth and composition of the facades have been carefully detailed and tested to maintain a sense of articulation while suitably increasing thermal performance to tackle climate change.



Marked up south-east elevation of external wall types.

ONE MILTON AVENUE (S4) BUILDING ENVELOPE



CHOICE OF MATERIALS AND COLOURS

Bay study from plant screen to active frontages and building entrances.

Metal cladding to rooftop plant with perforated panels within featured arches

Full height windows to top floors

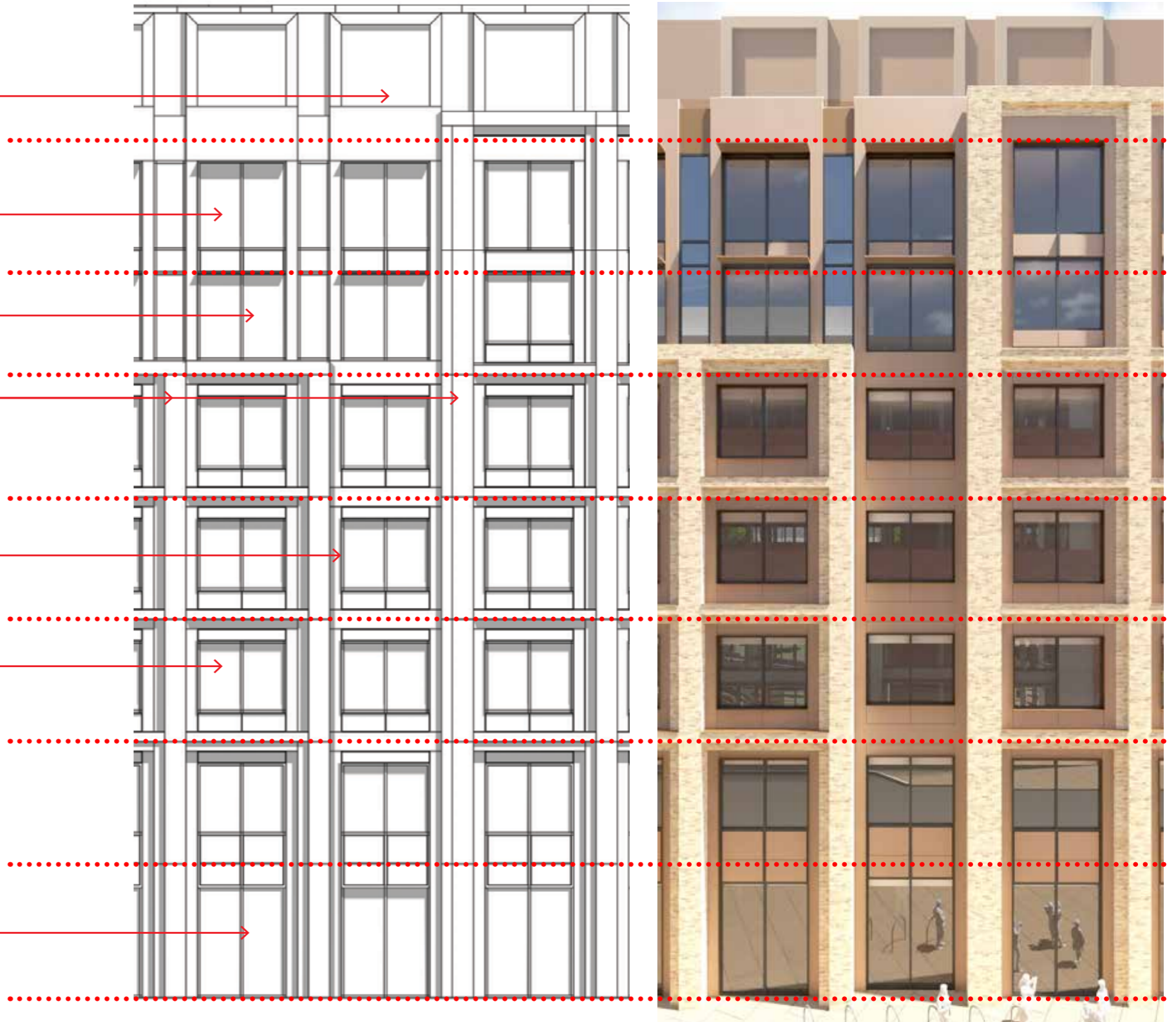
Doors to terraces on levels 5 and 6

Two heights of brick framing separated by slot of metal and glass

Metal cladding reveal between brick articulation

Windows with low-level spandrels to typical floors and metal sills to brickwork

Full height windows, entrance doors and deep brick reveals to lower floors



Bay study for One Milton Avenue (S4).

ONE MILTON AVENUE (S4) ILLUSTRATIVE VIEWS

make



Illustrative view of One Milton Avenue from the north at the junction of Milton Avenue and Milton Walk.

ONE MILTON AVENUE (S4) ILLUSTRATIVE VIEWS

make



Illustrative view of One Milton Avenue from the east at the junction of Milton Avenue and the Link.

ONE MILTON AVENUE (S4) ILLUSTRATIVE VIEWS

make



Illustrative view of One Milton Avenue from the north-east at the junction of Milton Avenue and Milton Walk.

ONE MILTON AVENUE (S4) ILLUSTRATIVE VIEWS

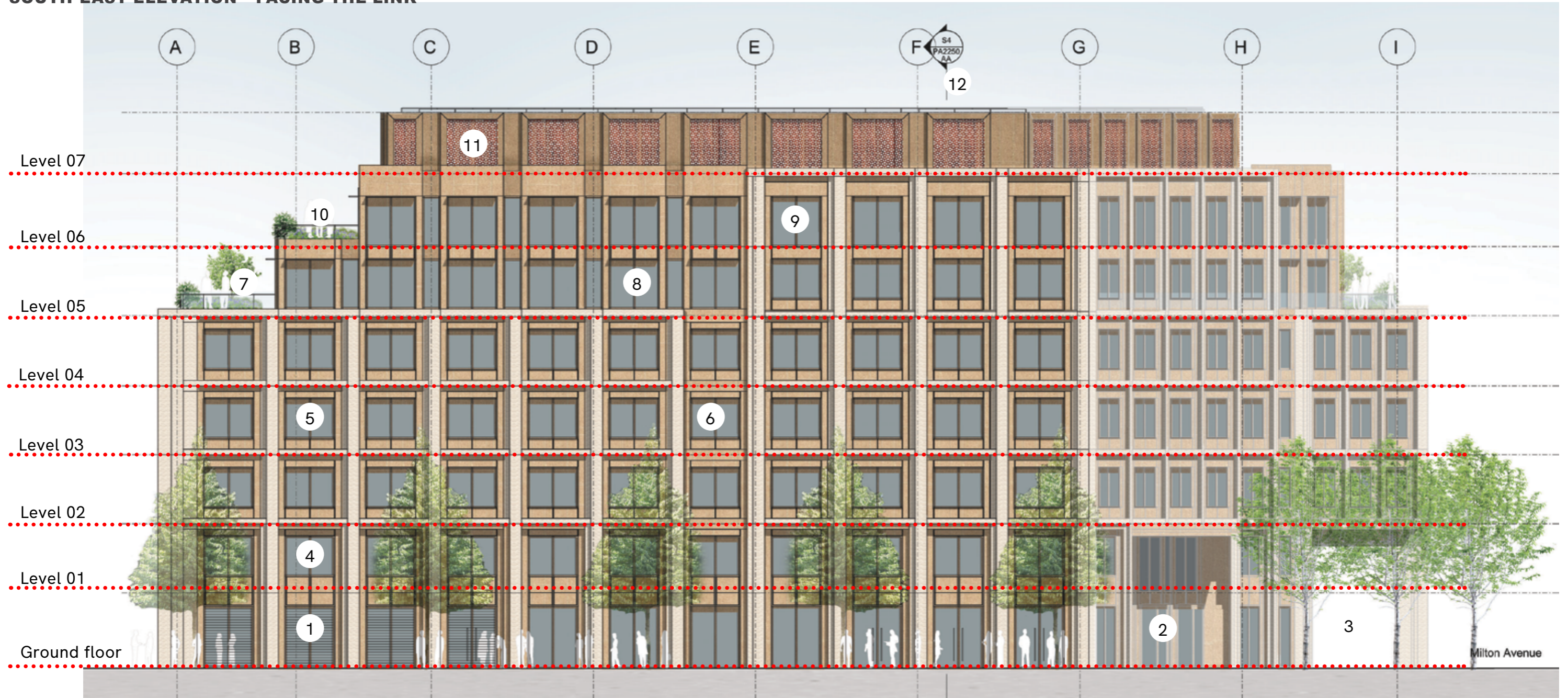
make



Illustrative view of One Milton Avenue from the north-west corner at the junction of Chesterton Way and Milton Walk.

ONE MILTON AVENUE (S4) ELEVATIONS

SOUTH-EAST ELEVATION – FACING THE LINK



1. Full height windows, entrance doors, louvred panels and deep brick reveals to lower floors.

2. Inset entrance vestibule with full-height opening/sliding drum doors.

3. Double-height pedestrian colonnade leading to residential district.

4. Level 1 window with low-level spandrels.

5. Typical bay window with low-level spandrels and metal sill, set in between articulated brick piers providing shade.

6. Metal and glass 'reveal' providing natural break between two brick heights.

7. Level 05 terrace with metal and glass balustrade and external metal brise soleil to south-east and south-west facades.

9. Full-height windows to top floor level 06.

10. Level 06 terrace with metal and glass balustrade and external metal brise soleil to south-east and south-west.

11. Metal plant screen incorporating perforated panels framed by metal arch detail.

12. Top of plant roof with PV panels providing renewable energy resource.