

LANDSCAPE AND OPEN SPACE WILD PARK

Logistics/construction compound (temporary)

Natural play area

Timber board walk across existing Open Mosaic Habitat

Existing cat C tree group to be selectively thinned and removed to allow open mosaic seed bed to germinate

Natural play area

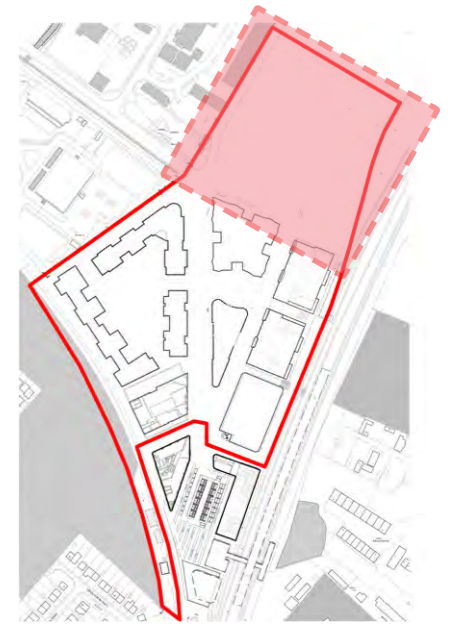
Proposed native tree clusters

Visitor cycle parking - Sheffield cycle stands

Proposed Open Mosaic Habitat seeding

Existing Open Mosaic Habitat seeding

Selective retention of existing trees and scrub (shown indicatively)



Deadwood, brush piles, hibernacula

Interpretation board
Transplanted willows

Rustic timber bench

Natural play - fallen logs/stumps and timber play sculpture

Balancing pond with moisture tolerant seeding to banks

Circular pedestrian recreational route around balancing pond, laid to Breedon gravel

Platform decking/shelter for socialising

Future cycle link to the north
Interpretation board

Entrance to Network Rail compound



0 20 30M



LANDSCAPE AND OPEN SPACE

WILD PARK: RECREATION AND NATURAL PLAY

Timber board walk across existing Open Mosaic Habitat

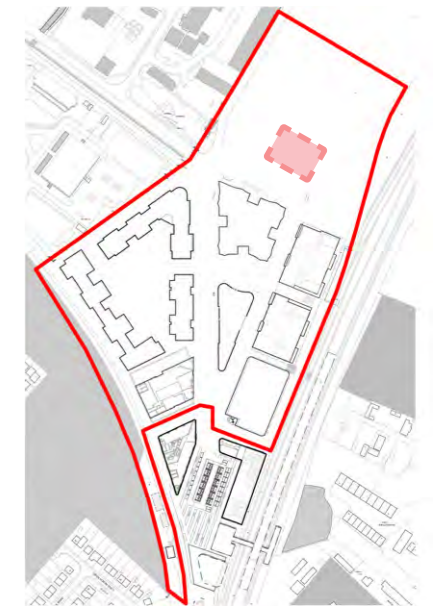
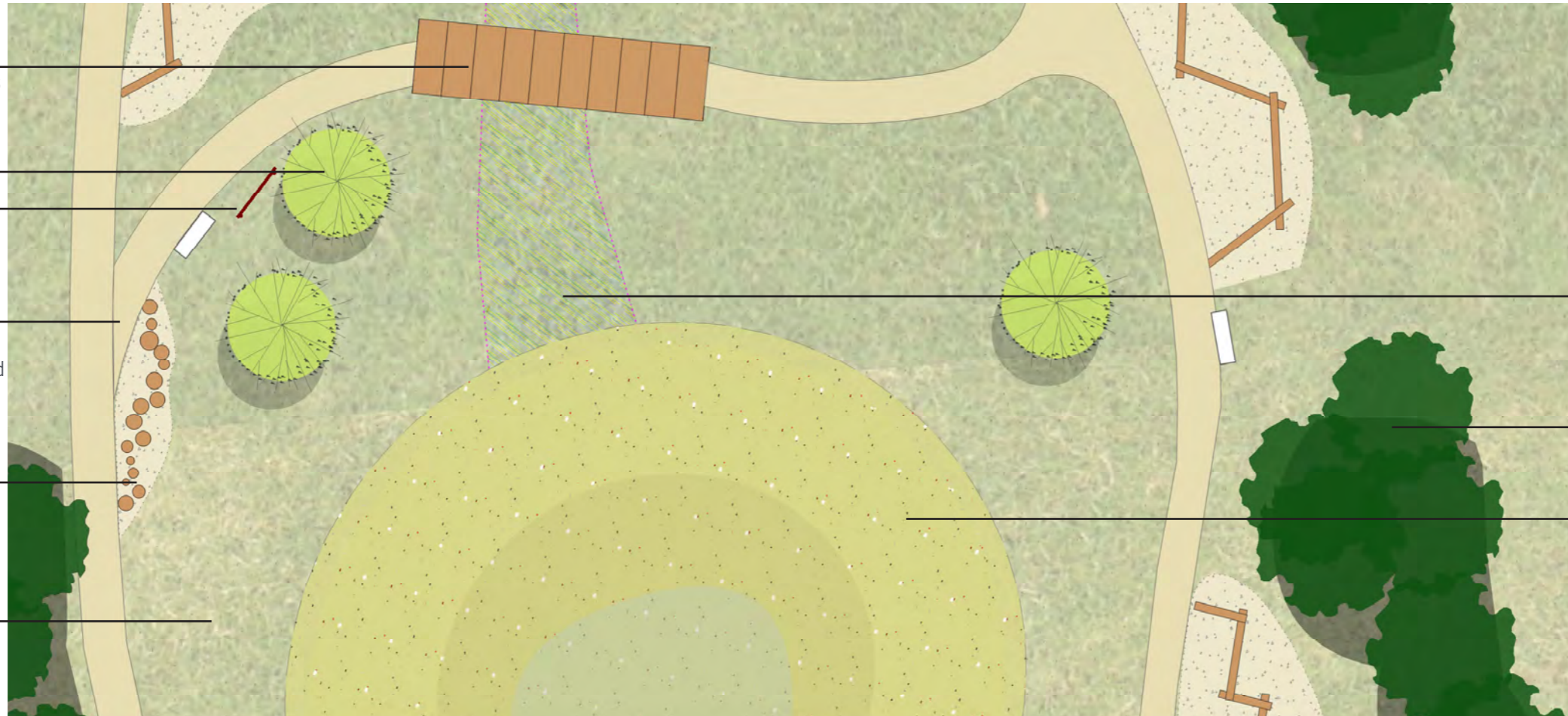
Transplanted Willows

Interpretation board

Circular pedestrian recreational route around balancing pond, laid to Breendon gravel

Natural play - fallen logs/stumps and timber play sculpture

Proposed Open Mosaic Habitat seeding (bespoke mix to repeat/compliment existing species list)



Existing Open Mosaic Habitat seeding

Existing vegetation to be retained

Balancing pond with moisture tolerant seeding to banks



LANDSCAPE AND OPEN SPACE WILD PARK PRECEDENTS



Breedon gravel surfaced paths through meadow grassland existing trees/scrub



Timber balancing equipment



Mown paths leading to seating areas



Open Mosaic species supplemented with additional seeding of the same and compatible species seed mix



Timber structure/shelter for informal seating



Multiple opportunities for natural play

9. Green Infrastructure

LANDSCAPE AND OPEN SPACE EXISTING VEGETATION STRATEGY

KEY

-  Site boundary
-  Open Mosaic Habitat location
Good condition*
-  Open Mosaic Habitat location
Moderate condition*
-  Open Mosaic Habitat location
Poor condition*
-  Existing tree or tree group
Cat B**
-  Existing tree or tree group
Cat C**
-  Existing building
-  Proposed building location
-  Vegetation to be removed

* Refer to RPS drawing Phase I habitat map
** Refer to Hayden drawing 9251-D-CP Tree survey

TARGET NOTES

- 1 Translocate Open Mosaic Habitat (OMH) seedbed to roof surfaces and maintain as OMH
- 2 Remove existing vegetation, comprising young self-seeded Birch and Goat Willow
- 3 Transplant existing mature pollarded willows to 'Wild Park'
- 4 Clear bramble thickets. Add native hedgerow and 'scallops' of native shrubs. Deadwood willow trunks to remain for wildlife.
- 5 New planting should not impeded access to maintenance of existing tree belt outside redline
- 6 Retain areas of OMH. New balancing pond and paths to avoid OMH or cross it without damage
- 7 Selectively remove approximately 85% of scrub Birch and Willow, to allow the higher value OMH (existing and proposed seeding) to succeed
- 8 Replace Hedge Maple avenue with larger growing species London Plane to increase shading and visual impact

