

# Northstowe Community Centre

Design Update



CZWG

prd

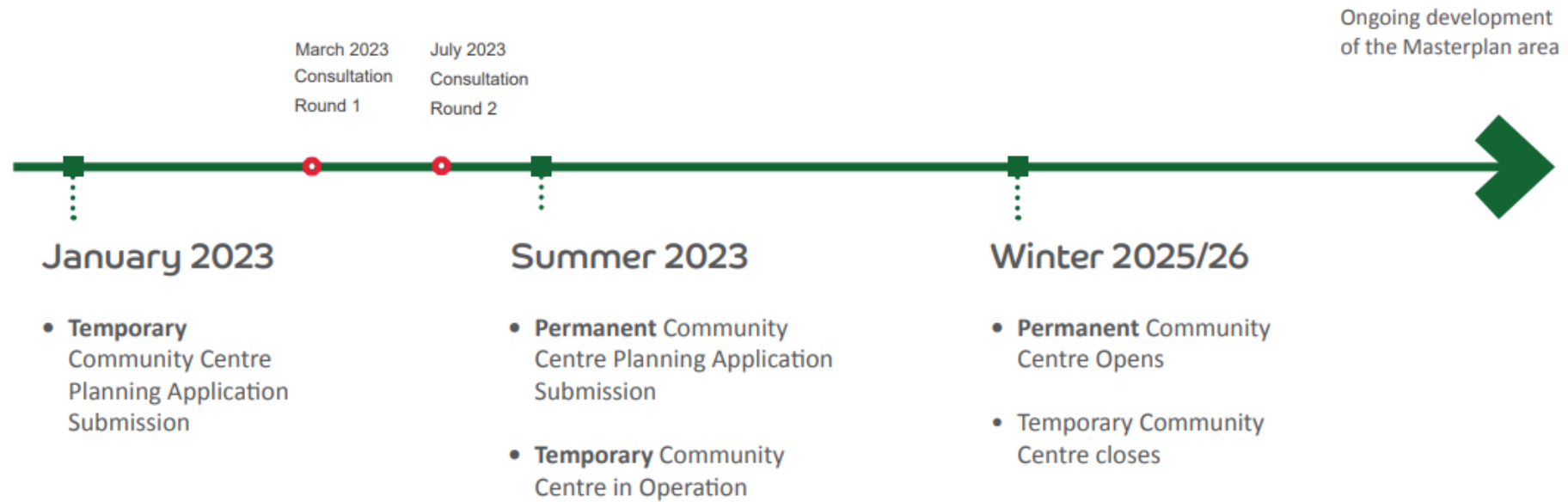
steer



OKRA



# Timeline



## The Brief - Main Spaces

### MAIN HALL

A large multi-purpose hall for formal and informal events; public assembly, visual and performing arts, practice and tuition, lectures and demonstrations. Fold out partitioning to enable hall to be split into two or three separate spaces. Adequate storage accessible to multiple groups.

### FOYER/CAFÉ

An informal community gathering space, serving hot drinks/snacks for waiting, meeting and greeting. Welcoming and open, suitable for casually drop in. A comfy space incorporating 'nooks and crannies' to enable quiet spaces for people to relax away from general café area, breast feed etc.

### KITCHEN

Small commercial kitchen to serve the main hall and café.

### FOOD BANK

Storage area with fridge/freezer. Discreet access arrangements.

### CENTRE STAFF OFFICE

A base for staff; a reception and booking point, records store and location for the centre's master service control.





### COMMUNITY CO-WORKING/SHARED SPACE

A free-range space for community book share/swap-shop and co-working, including a computer area.

### MESSY ACTIVITY SPACE

A robust 'make space' for arts and crafts, workshop or other messy activities, ideally connected to the secure courtyard garden. Could be used by play-groups.

### CONSULTATION/MEETING ROOMS

Multi-purpose spaces for meetings and groups, visiting community workers, including police, and potentially NHS clinics.

### STORAGE

Rentable spaces convenient for clubs and groups to store larger items, as well as community centre equipment and furniture. To include outside storage space.

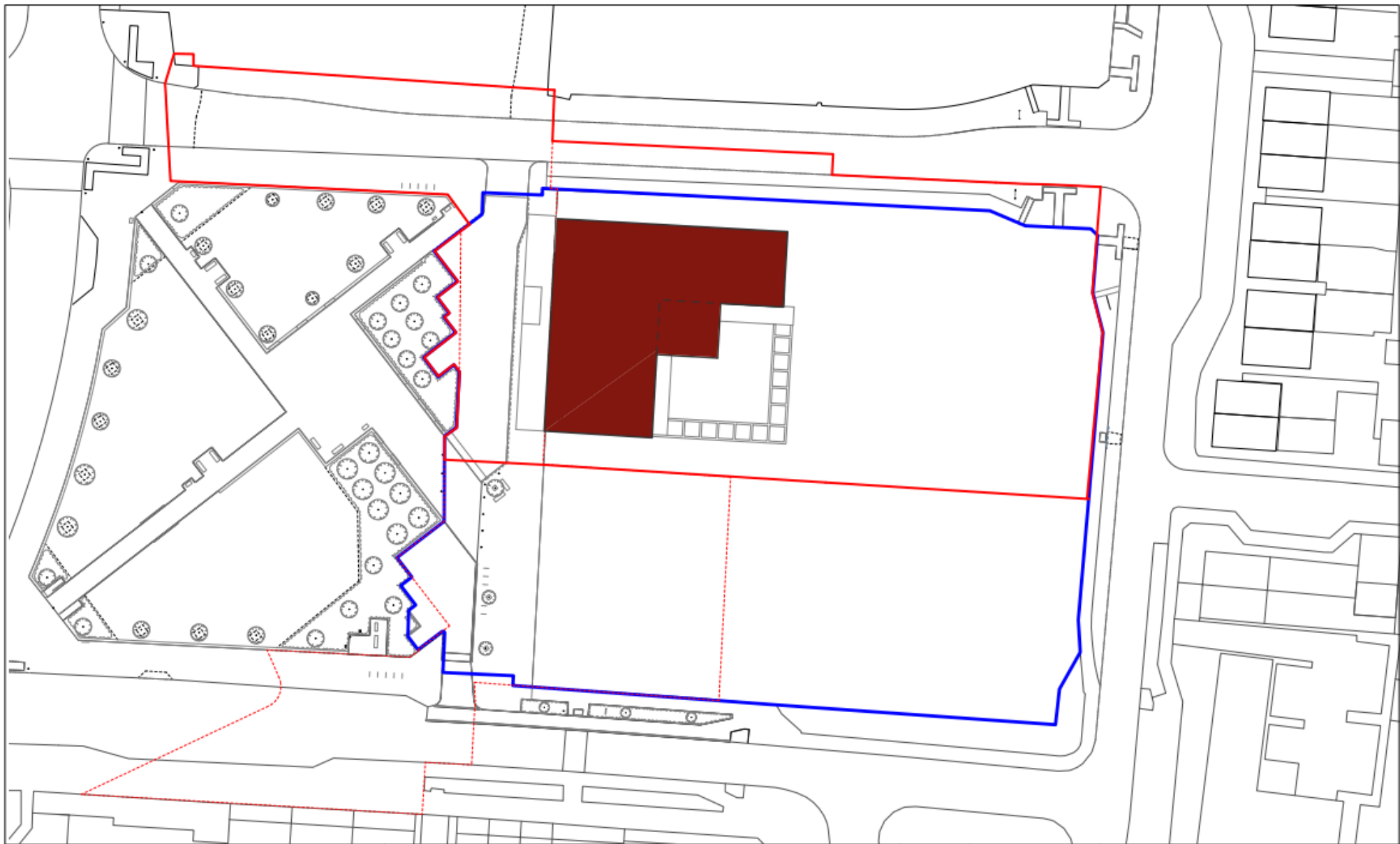
### TOILETS

Convenient locations, to include disabled toilets, a 'family toilet' and Changing Places toilet.

### OUTDOOR SPACES

Public outdoor areas to include external seating with easy access from the café and other public areas, as well as a more secluded, outdoor space for 'closed' events and controlled, safe play space for children. A roof terrace area would also be desirable.





- Proposed Site Boundary
- SCDC ownership
- - - - Site Boundary - Temporary Community Centre

**NOTES:**

THIS DRAWING IS BASED ON DIMENSIONAL INFORMATION PROVIDED BY OTHERS. AR URBANISM CANNOT ACCEPT RESPONSIBILITY FOR THE ACCURACY OF THIS SURVEY INFORMATION. THIS DRAWING SHOULD BE READ IN CONJUNCTION WITH ALL RELEVANT DRAWINGS, SPECIFICATIONS, SCHEDULES AND OTHER CONTRACT INFORMATION ISSUED BY THE ARCHITECT, STRUCTURAL ENGINEER, SERVICES ENGINEER AND ANY OTHER CONSULTANT EMPLOYED OR RETAINED BY THE EMPLOYER IN RESPECT OF THESE WORKS. REPORT ANY DISCREPANCIES, CONFLICTS, ERRORS OR OMISSIONS TO THE CA AND SEEK DIRECTIONS BEFORE PROCEEDING. ONLY DRAWINGS SHOWN WITH STATUS 'CONSTRUCTION' ARE TO BE USED FOR CONSTRUCTION.

DO NOT SCALE FROM THIS DRAWING. USE ONLY FIGURED DIMENSIONS. IN THE CASE OF NEW WORKS, ALL DIMENSIONS SHOWN ARE TO THE FACE OF MASONRY, THE CENTRE LINE OF STRUCTURAL STEEL MEMBERS, OR THE FINISHED FACE OF STUD PARTITIONS, UNLESS NOTED OTHERWISE. IF IN DOUBT ASK!

CONFIRM ALL DIMENSIONS, LEVELS AND GREY INVERT LEVELS AT CONNECTION POINTS ON SITE PRIOR TO COMMENCING WORK.

THIS DRAWING AND THE WORKS DEPICTED ARE THE COPYRIGHT OF THIS PRACTICE AND MAY NOT BE REPRODUCED EXCEPT BY WRITTEN PERMISSION.

THE PURPOSE OF THIS DRAWING IS: **Information**



DRAWING STATUS:  
**Sketch**

JOB:  
Temporary Community Centre,  
Northstowe

SHEET SIZE:  
**A3**

SCALE:  
**1:500**

AR Urbanism  
a: 63 Rivington Street, London,  
EC2A 3EQ  
t: +44 (0) 20 5290 8979  
e: UKstudio@ar-urbanism.com

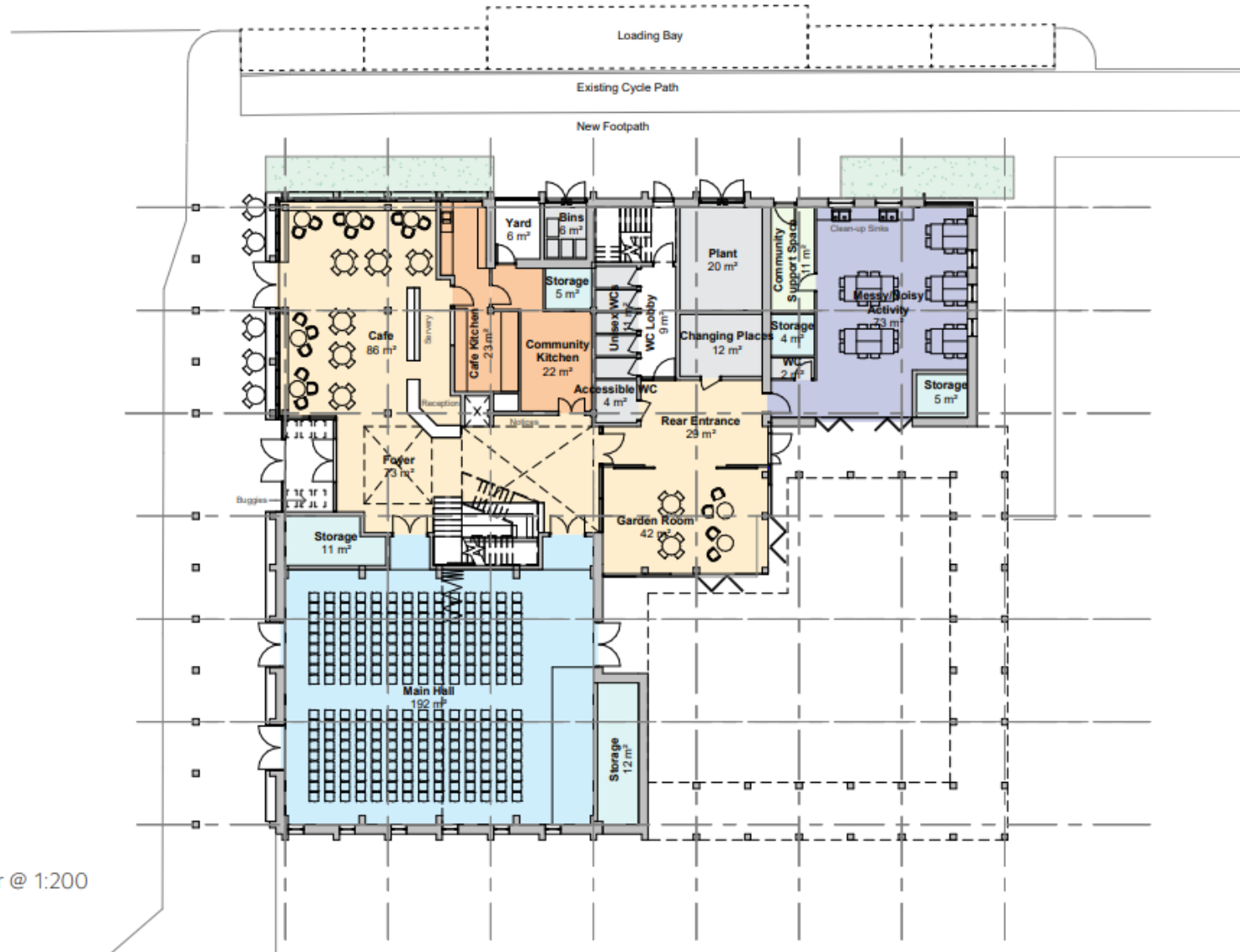
DRAWING TITLE:  
**RED BOUNDARY LINE**

PROJECT NAME:  
**NORTHSTOWE COMMUNITY CENTRE**

CLIENT:  
**SOUTH CAMBRIDGESHIRE DISTRICT COUNCIL**

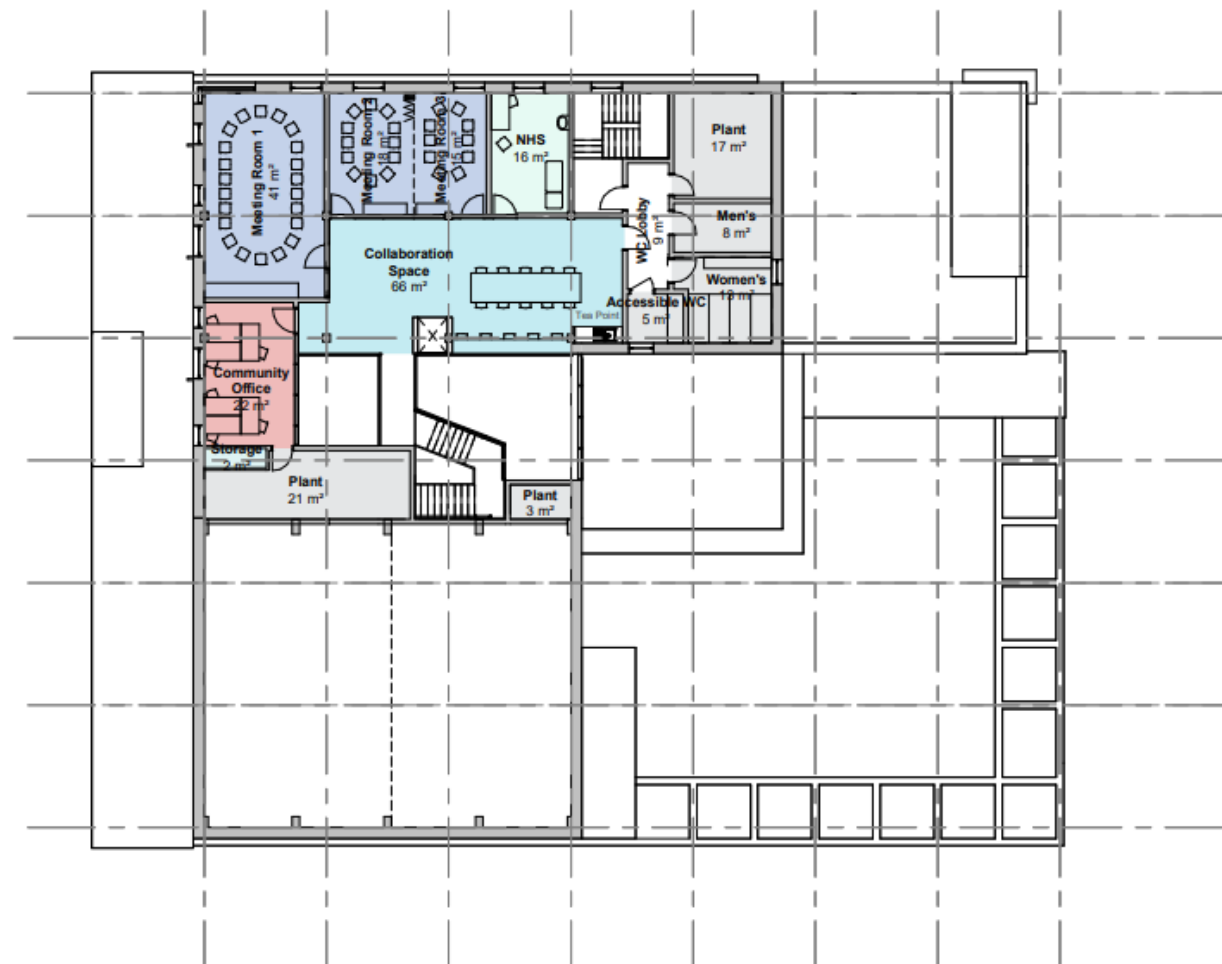
DRAWN BY: AP	APPROVED BY: RB	DATE: 30/06/2023	DRAWING NO. SK_2301- 0413 rev 5
-----------------	--------------------	---------------------	------------------------------------

Stirling Road



Ground Floor @ 1:200





First Floor @ 1:200



























## Engineered and Sawn Timber Hybrid

- Brent Cross Pavillion
- Embodied carbon of structure- 250kgCO<sub>2</sub>/m<sup>2</sup>



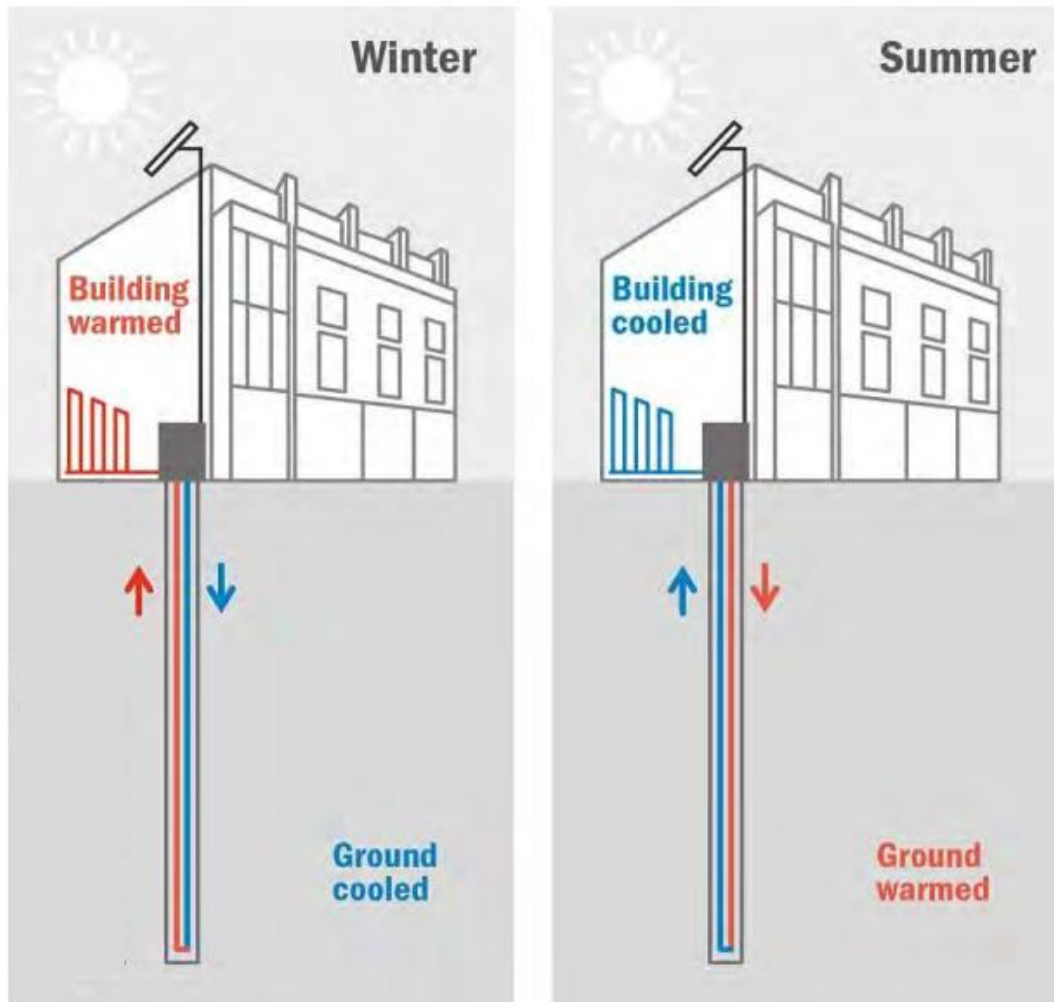
## Use Renewable Energy

- On-site renewable generation to meet operational energy demands
- PVs on pitched roof to maximise generation throughout the year
- Battery storage to be reviewed once energy demand and generation better understood



### Supply Energy Efficiently

- Exploring feasibility of ground source heat pump system
- Balance of heating and cooling demands results in higher efficiencies
- Utilise ceiling-mounted fan coil units for efficient heating and cooling of spaces
- Zone the different spaces of the building with separate systems to avoid over-sizing equipment and demand responsive heating/cooling



GSHP seasonal operation



## Health and Wellbeing

- Compact building form should allow good daylight for all spaces
- Daylighting needs to be carefully balanced with energy strategy
- Adopt biophilic design principles
- Acoustics requirements will challenge natural ventilation strategy
- Relaxed setpoints for thermal comfort, to reduce peak heating and cooling loads



High quality internal and external spaces



### Landscape design principles

The community center is situated next to the existing open space, it's a strategic location to develop a meeting point for people in the community. The landscape design aims to contribute to four major topics including biodiversity, nature inclusive design, sustainable water management and well-being.



IMPROVE BIODIVERSITY



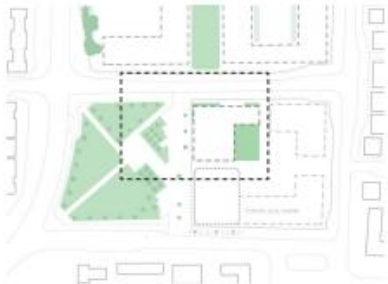
NATURE INCLUSIVE



SUSTAINABLE WATERMANAGEMENT



WELL-BEING

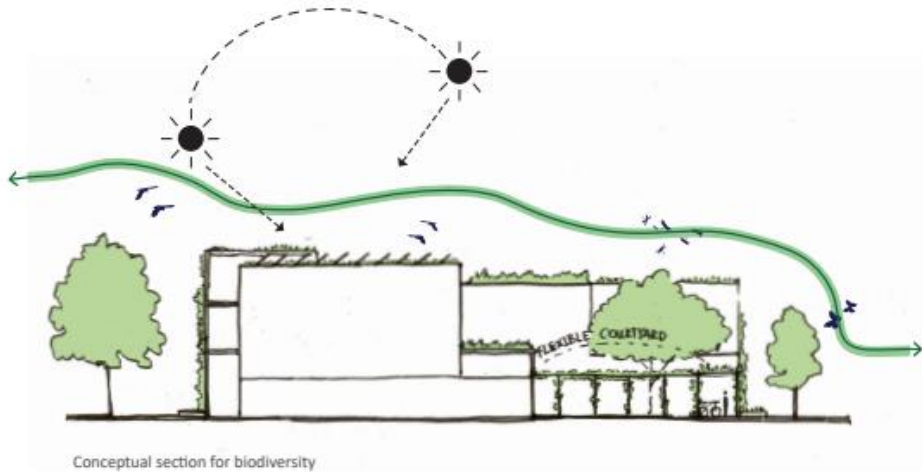


Maximizing green



## Improve Biodiversity

- Retain and protect the existing trees where possible
- Use native species in the planting scheme
- Biodiversity maintenance is concerned, for instance, schedule vegetation works between September and February to avoid impacts on breeding birds
- Variety types of habitat
- Apply Layered landscape Principle



## Nature inclusive principles

This can be considered in 3 different principles

### 1.) Nature inclusive on the roof



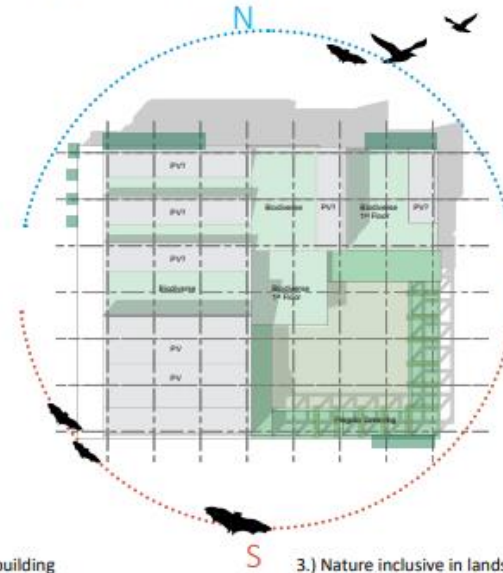
PV green roof



Bee lawn



Deadwood features



### 2.) Nature inclusive in building



Bird house on facade



Bat house on facade



Insect hotel



Connection for mammal



Bee house

### 3.) Nature inclusive in landscape

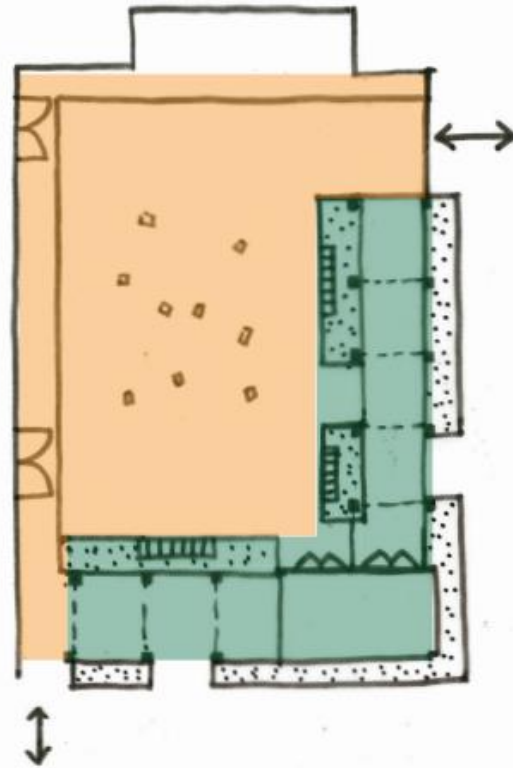


### Courtyard Zoning & Programs



The design can be described in two main zones which are multi-function courtyard and green gallery. Different programs can occur in these two zones.

Keyplan



#### MULTI-FUNCTION COURTYARD



Intimate seating



Flexible seating area



Safety play area



Community event

#### GREEN GALLERY



Meeting spot



Climbing plants on structure



Storage & bike parking



### Courtyard plan



Gravel/pebble pavement and plantation



Play area



Seating area

PRECEDENT IMAGES

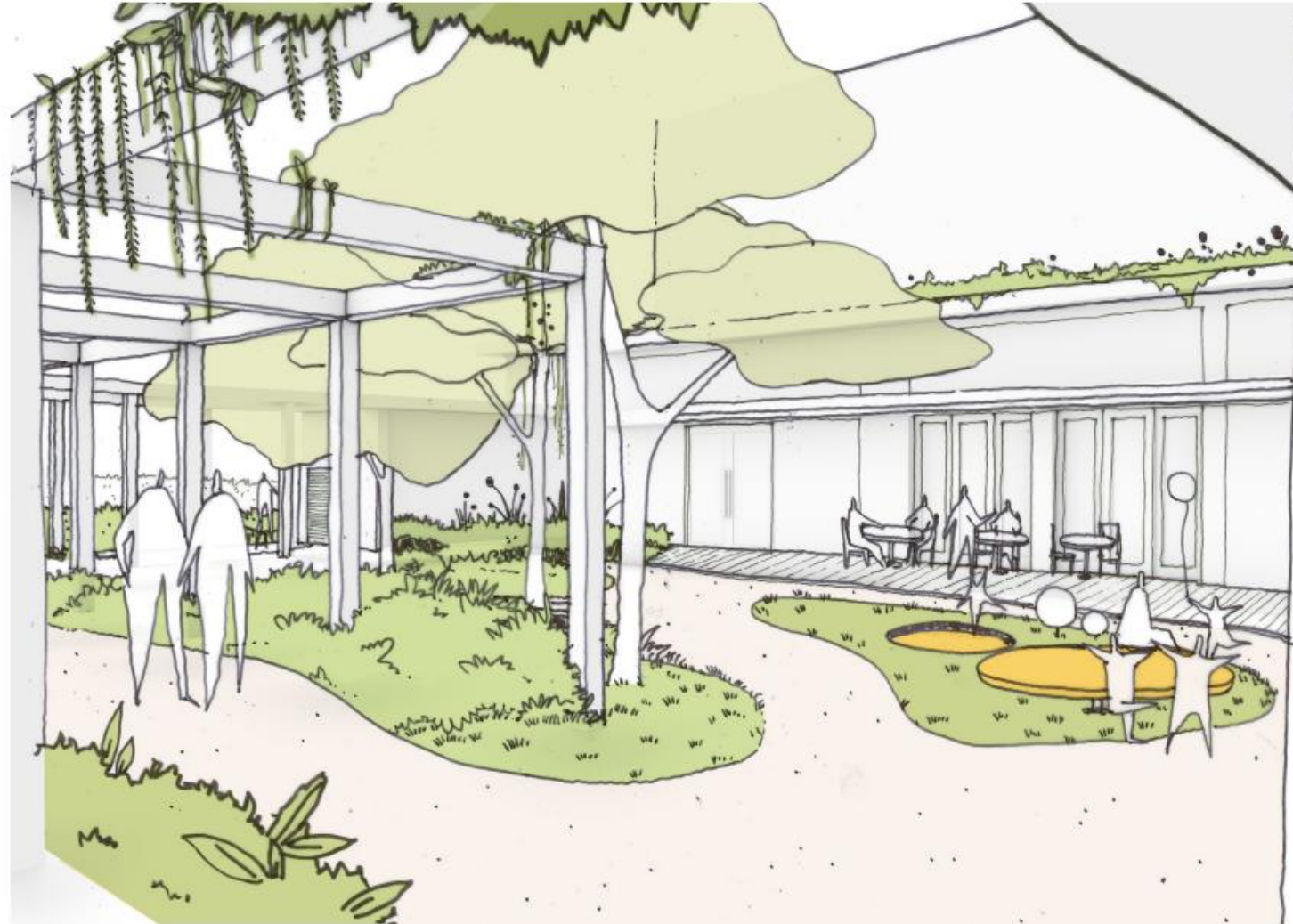


- 1 Garden room
- 2 Play area
- 3 Seating space
- 4 Spill out area
- 5 Pergola
- 6 Gate
- 7 Secured Bicycle stands (24 bicycle parking spaces)
- 8 Bicycle stands (46 bicycle parking spaces)
- 9 Planting area
- 10 Infiltrated pavement
- 11 Feature trees (new)
- 12 Prunus trees (relocate from the west side)



COURTYARD PLAN

Design development  
Courtyard - Atmosphere





**THANK YOU**

[northstowe@ar-urbanism.com](mailto:northstowe@ar-urbanism.com)