

# Northstowe Town Hub

Public Consultation 13th April 2026



Artists impression of the Town Hub when viewed from the High Street

Brickwork examples



Reference images of red/brown brickwork



Band D of the Design Code colour and material palettes are suitable for individual blocks such as the Town Hub

## Proposed Elevations



High Street Town Hub Elevation



Town Plaza Town Hub Elevation



Eastern Town Hub Elevation



Southern Town Hub Elevation

# Northstowe Town Hub

Public Consultation 13th April 2026



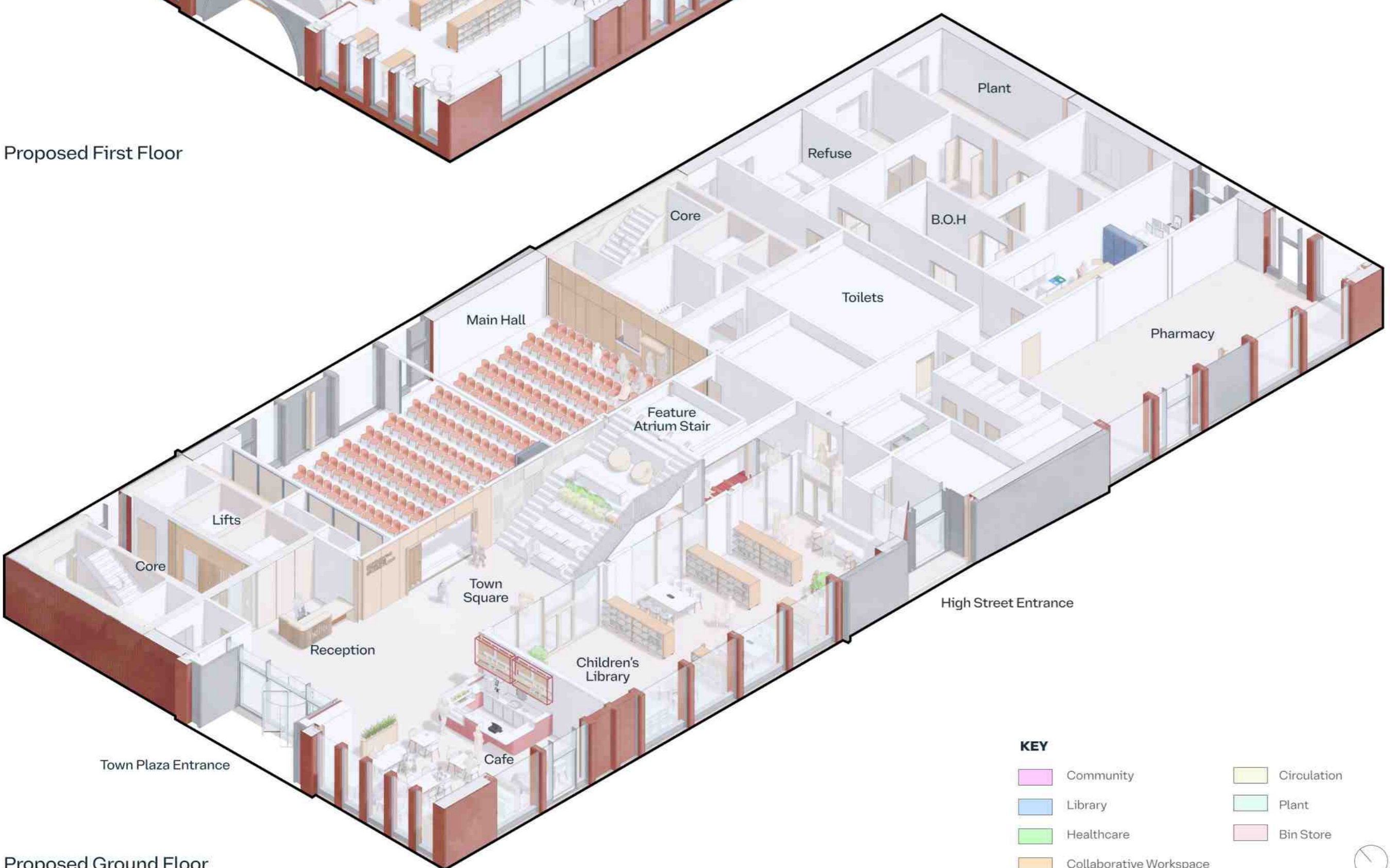
Artists impression of the Town Hub Plaza Entrance Foyer



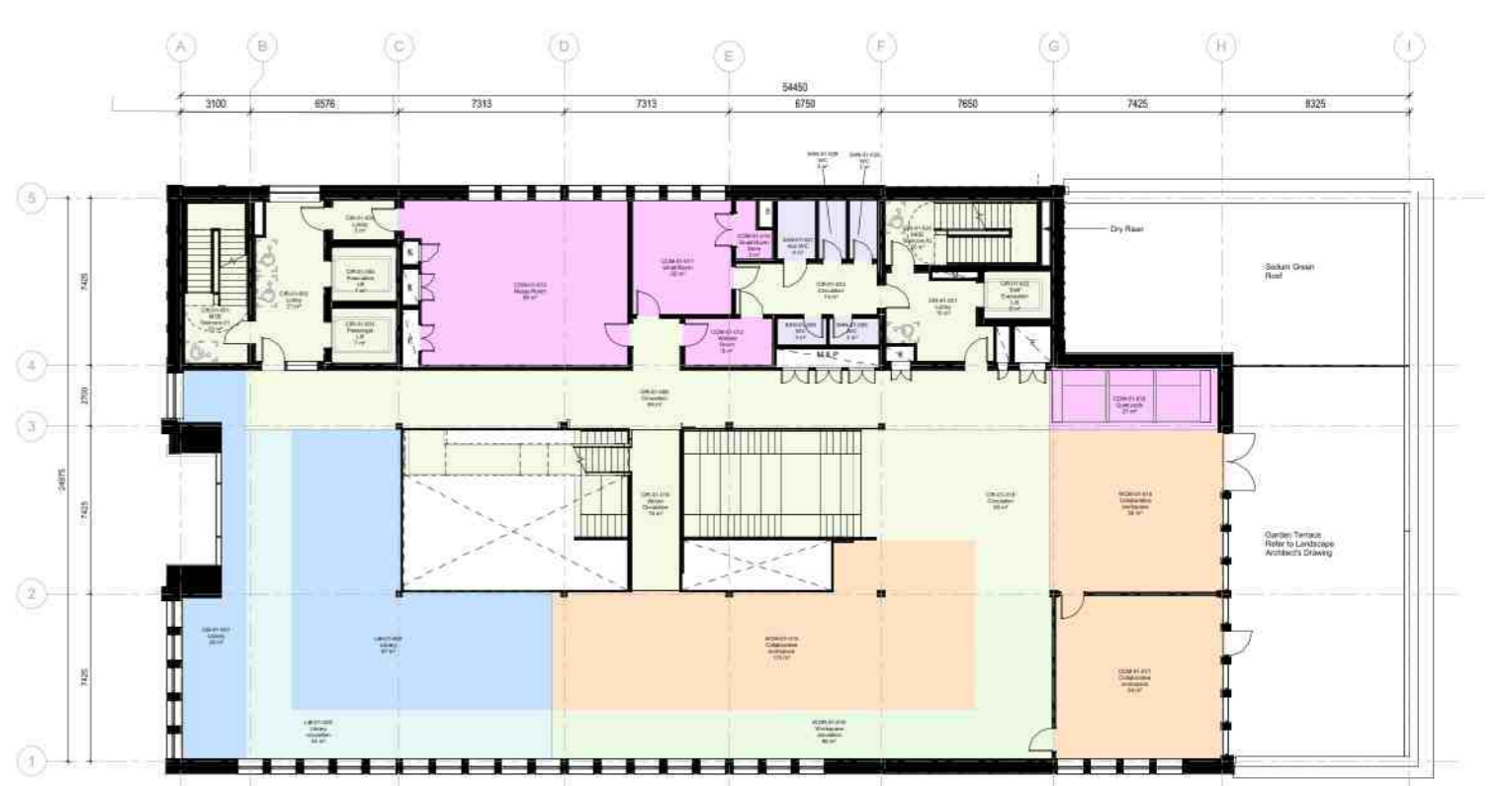
Proposed First Floor



Proposed Ground Floor Cafe



Proposed Ground Floor



Proposed First Floor



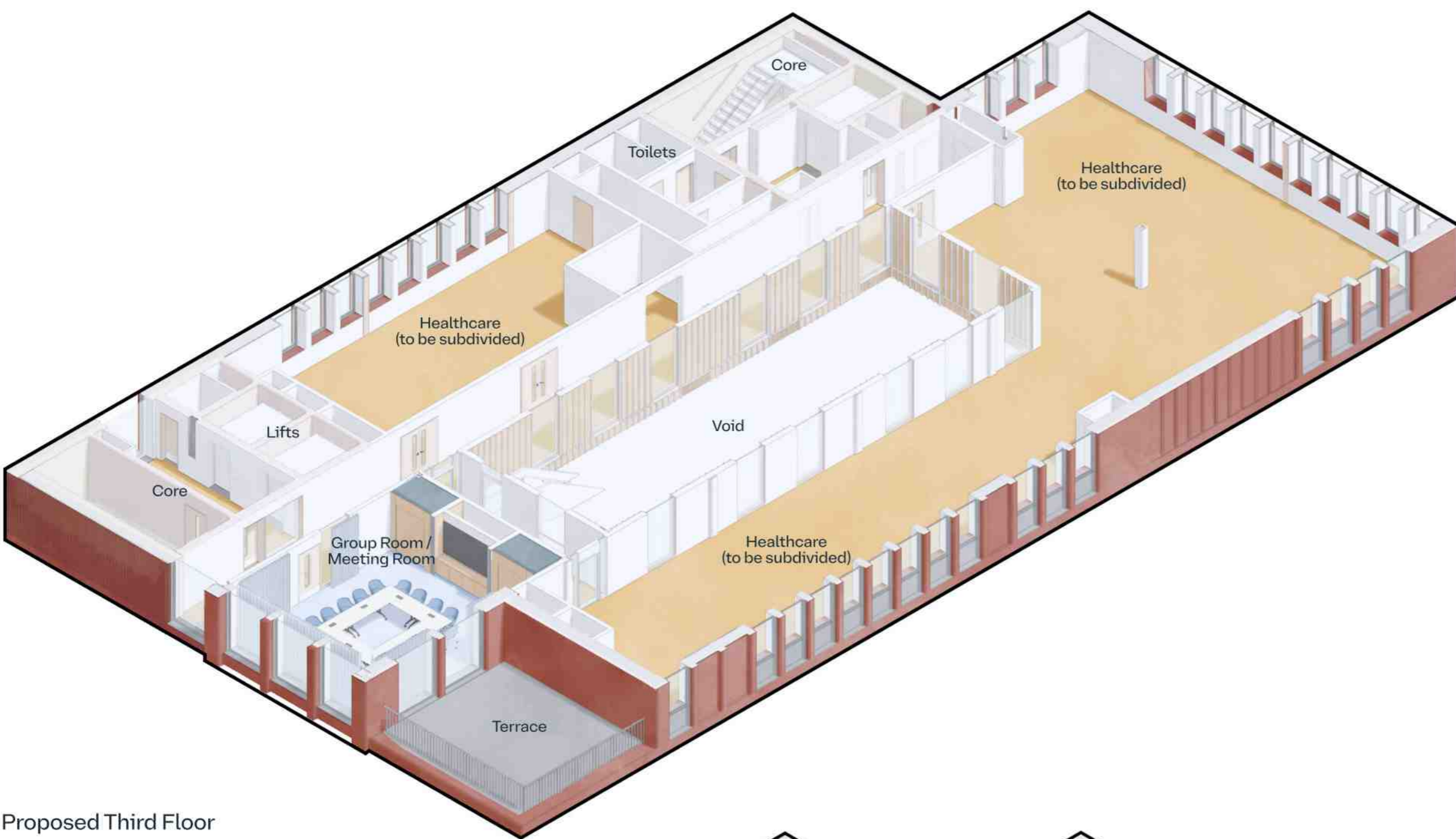
Proposed Ground Floor

# Northstowe Town Hub

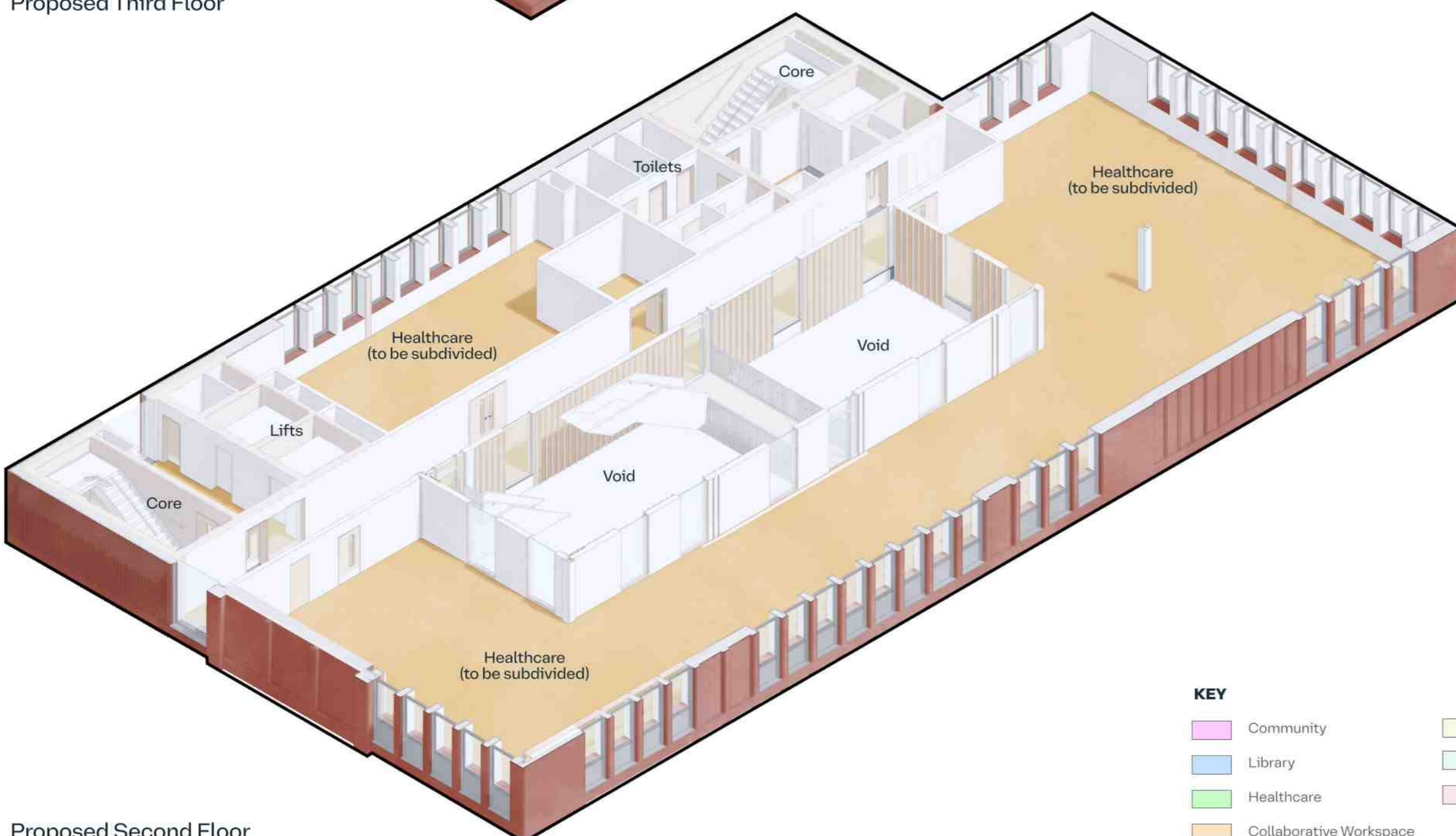
Public Consultation 13th April 2026



Artists impression of the Town Hub Atrium Space



Proposed Third Floor



Proposed Second Floor

- KEY**
- Community
  - Circulation
  - Library
  - Plant
  - Healthcare
  - Bin Store
  - Collaborative Workspace



Proposed Third Floor Group Room/Meeting Room



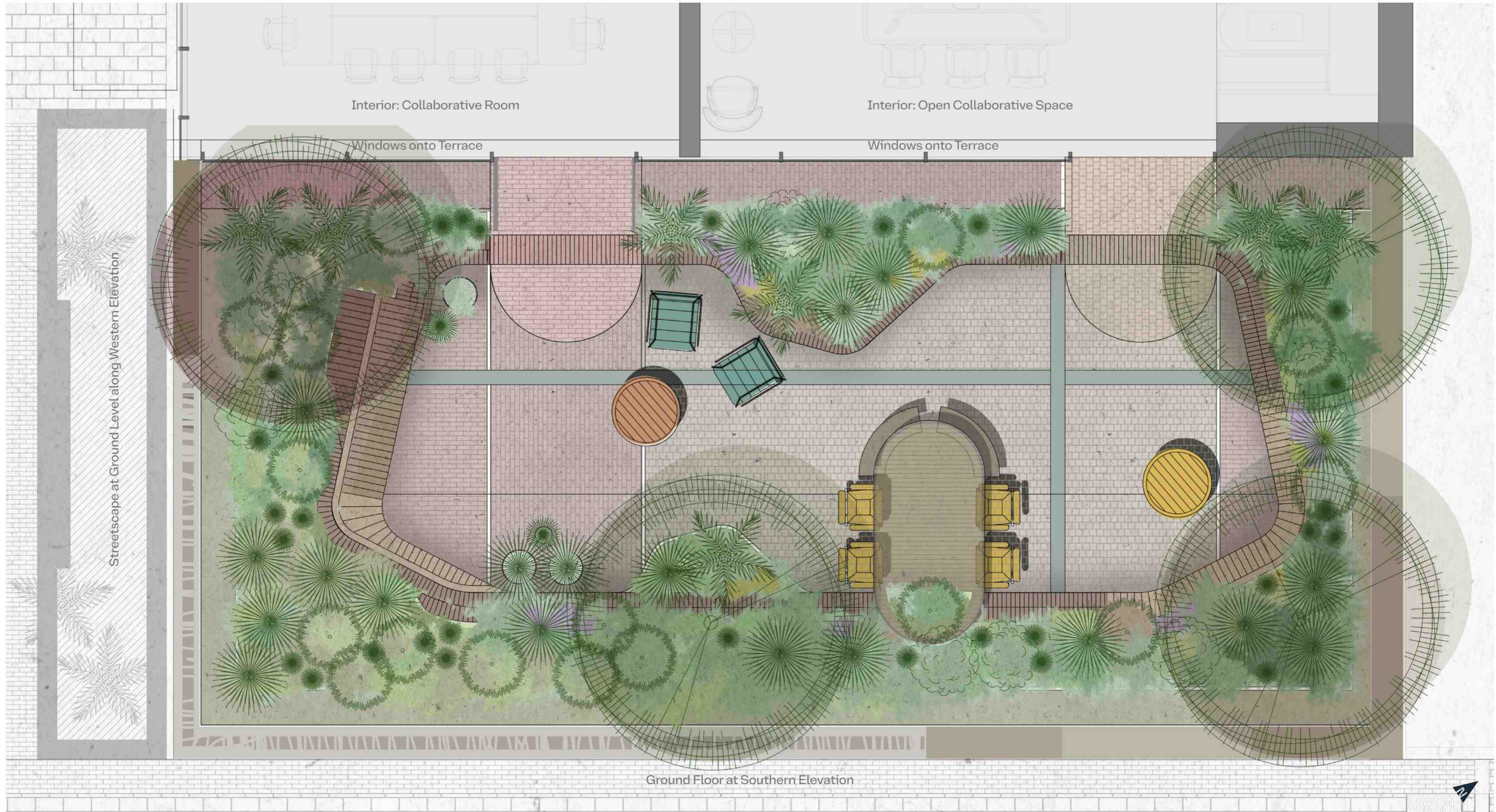
Proposed Third Floor



Proposed Second Floor

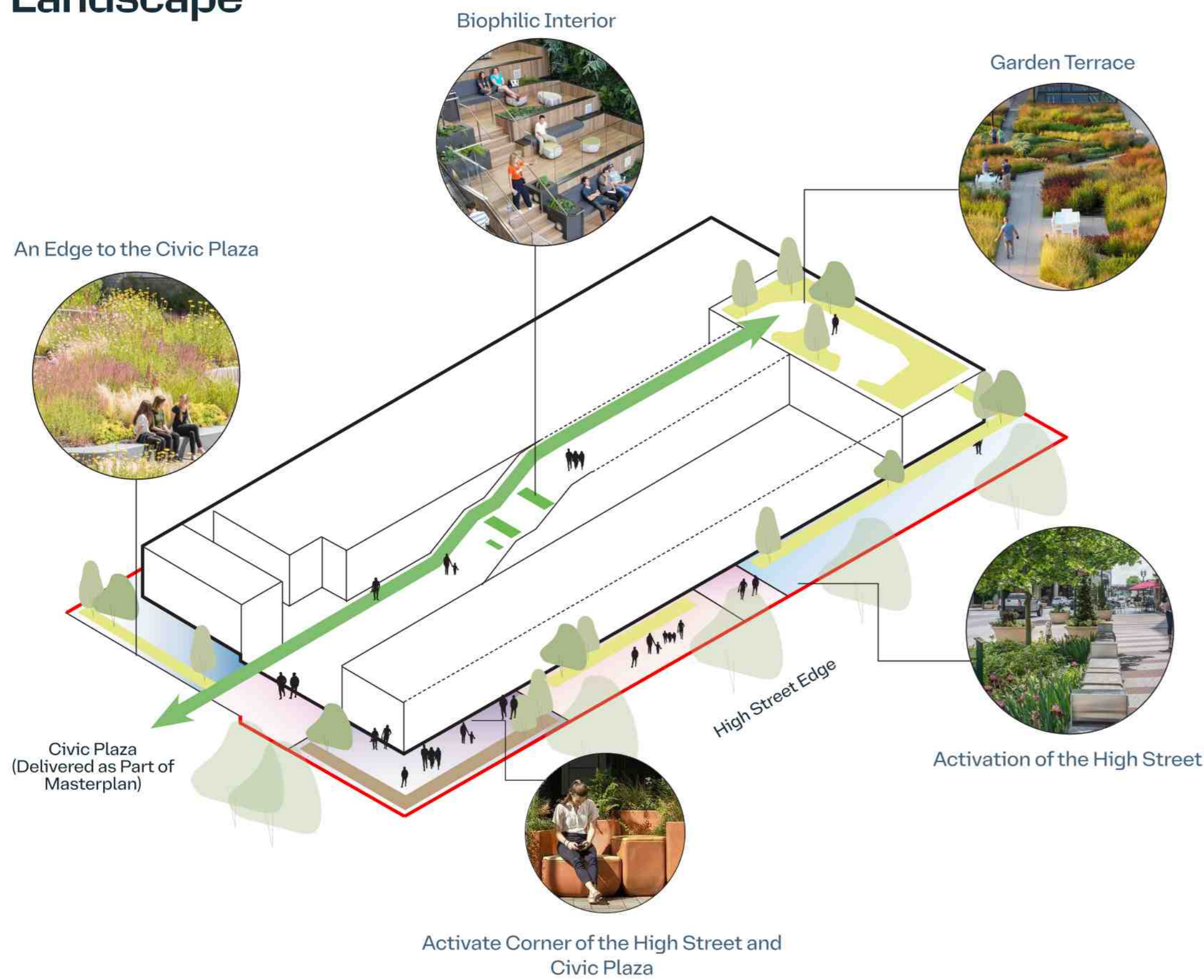
# Northstowe Town Hub

Public Consultation 13th April 2026

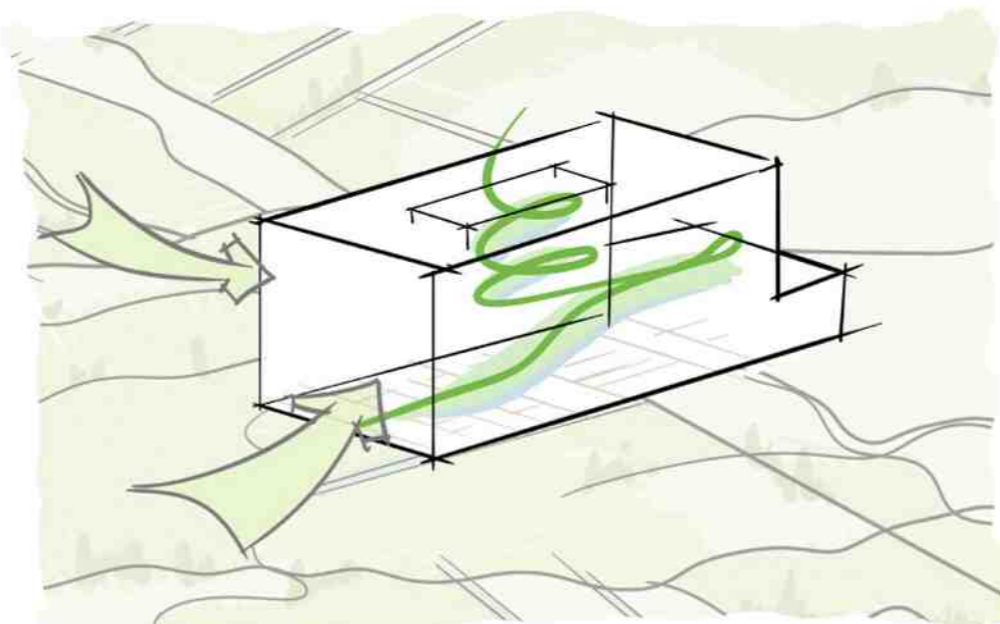


Artists impression of the First Floor Garden Terrace

## Landscape



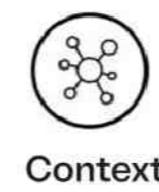
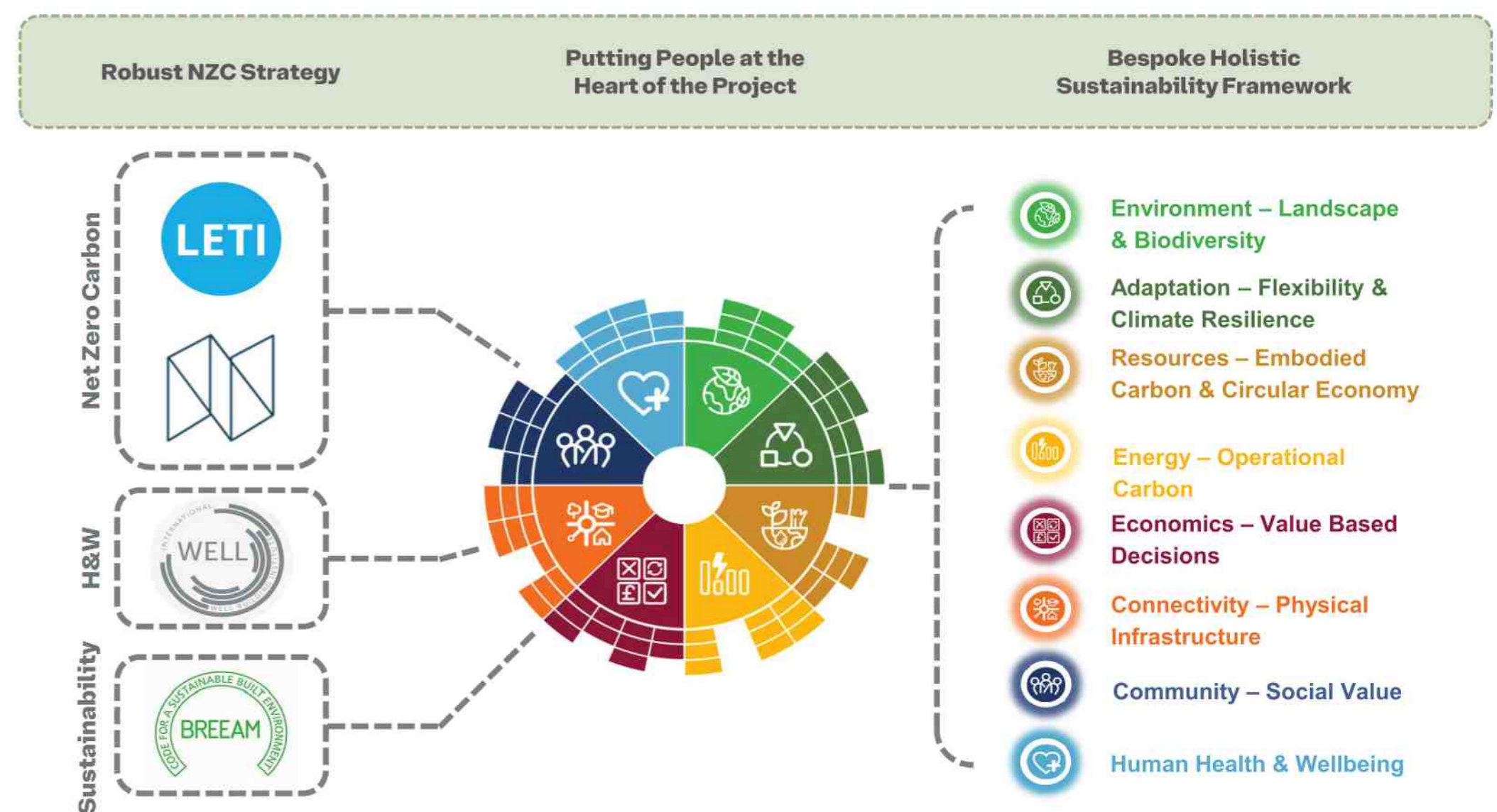
Connecting the building inside & out through materiality + planting



## Sustainability

### Core Sustainability Objectives

The approach applies the Eight Pillars of Sustainability to create a tailored, holistic sustainability framework that integrates elements from established certification standards and best-practice guidance. This ensures the project delivers meaningful value both to its users and to the wider community it serves.



Being inspired by the historical landscape for the design basis fosters a sense of belonging, linking past to present.



Activated frontage of key interior spaces along the high street. Atrium area connecting levels and community spaces.



Embedding historical craft & culture in design reflects the community's identity and values. A welcoming space that encourages connection, creativity and pride.



A town hub that satisfies the need for human connection and supports individual's feelings of belonging.