

## RURAL SETTLEMENTS LIST 2025-26

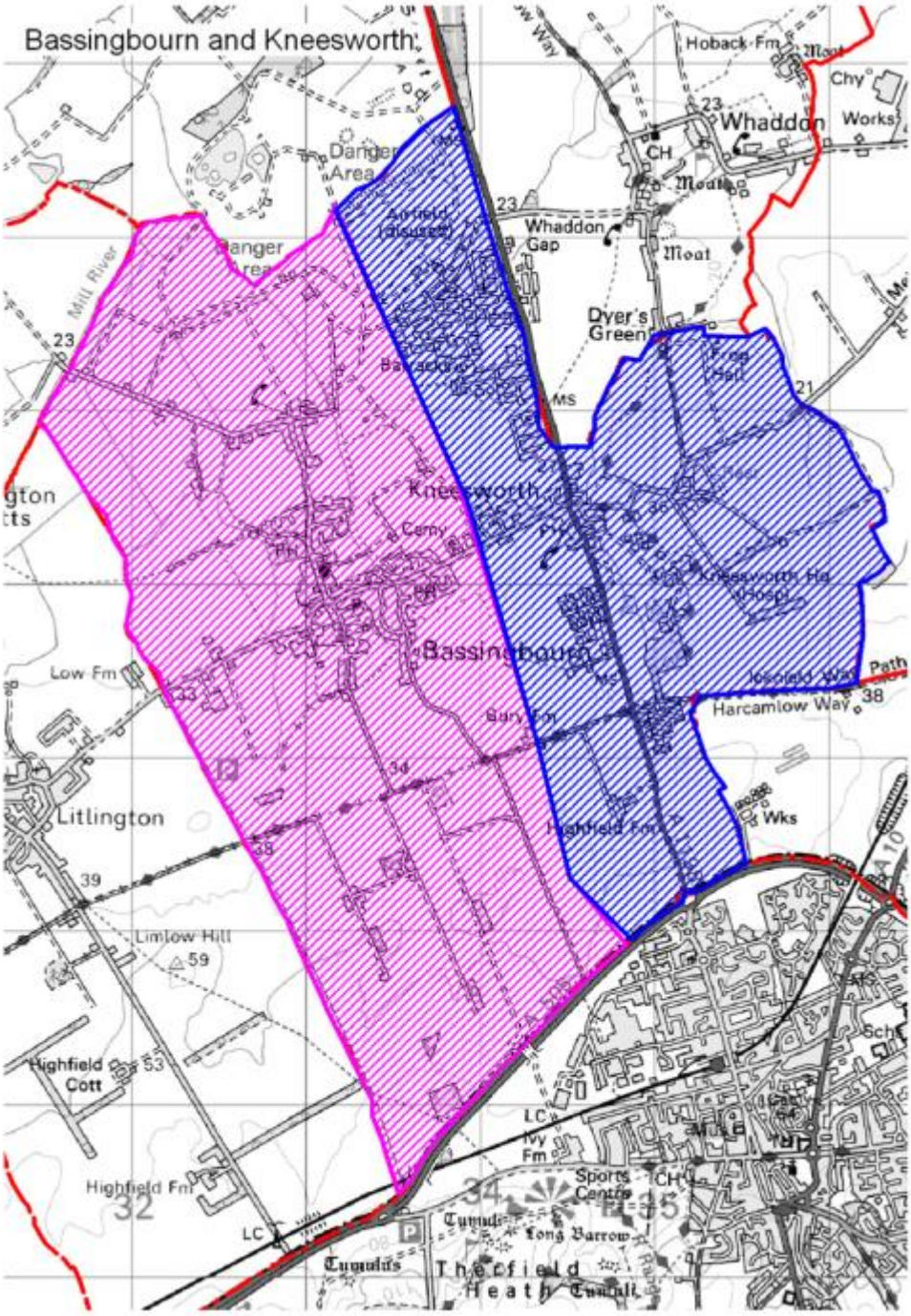
### APPENDIX A

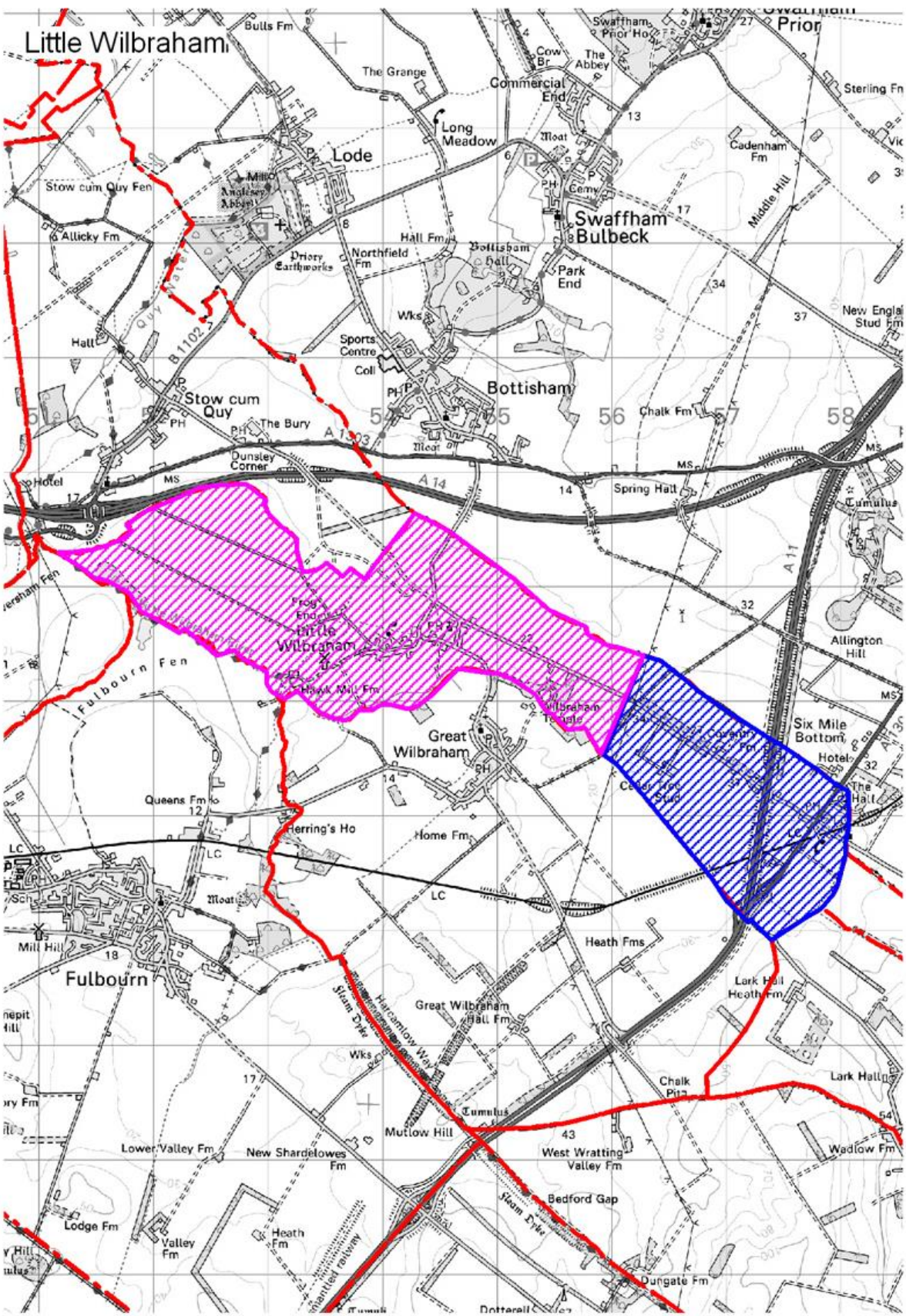
Designated Rural Settlements in South Cambridgeshire District with a Population less than 3,000 for 2025/26

All settlement boundaries are defined by the parish boundary, except those marked (\*) where the parish is divided into two rural settlements as shown in the maps in appendix B.

Settlement	Settlement	Settlement
Great Abington	Fen Ditton	Steeple Morden
Little Abington	Fen Drayton	Newton
Abington Pigotts	Fowlmere	Oakington
Arrington	Foxton	Orchard Park
Babraham	Little Gransden	Orwell
Balsham	Grantchester	Pampisford
Barrington	Graveley	Papworth St Agnes
Bartlow	Harlton	Rampton
Barton	Harston	Little Shelford
Bassingbourn (*)	Haslingfield	Six Mile Bottom (*)
Bourn	Hatley	Shepreth
Boxworth	Hauxton	Shingay-Cum-Wendy
Caldecote	Heydon	Shudy Camps
Carlton	Hildersham	Stapleford
Castle Camps	Hinxton	Stow-Cum-Quy
Caxton	Horningsea	Swavesey
Childerley	Horseheath	Tadlow
Chishill	Ickleton	Thriplow
Comberton	Kingston	Toft
Conington	Knapwell	Weston Colville
Coton	Kneesworth (*)	West Wickham
Croxton	Landbeach	West Wrating
Croydon	Litlington	Whaddon
Dry Drayton	Lolworth	Whittlesford
Duxford	Longstowe	Great Wilbraham
Elsworth	Madingley	Little Wilbraham (*)
Eltisley	Meldreth	Wimpole
Great Eversden	Guilden Morden	
Little Eversden		

APPENDIX B





## **APPENDIX C**

Villages that are Rural Settlements within the South Cambridgeshire District but have a Population of over 3,000 for 2025/26

Bar Hill

Cambourne

Cottenham

Fulbourn

Gamlingay

Girton

Hardwick

Histon

Impington

Linton

Longstanton

Melbourn

Milton

Over

Papworth Everard

Sawston

Great Shelford

Teversham

Waterbeach

Willingham