

TOWN COHOUSING.

COHOUSING AT NORTHSTOWE

Northstowe Community Forum | 11th September 2024





GOOD PLACES FOR BETTER LIVES



TOWN is a profit-with purpose developer. We deliver residential-led mixed-use development in the UK.

Our mission is to build good places for better lives.

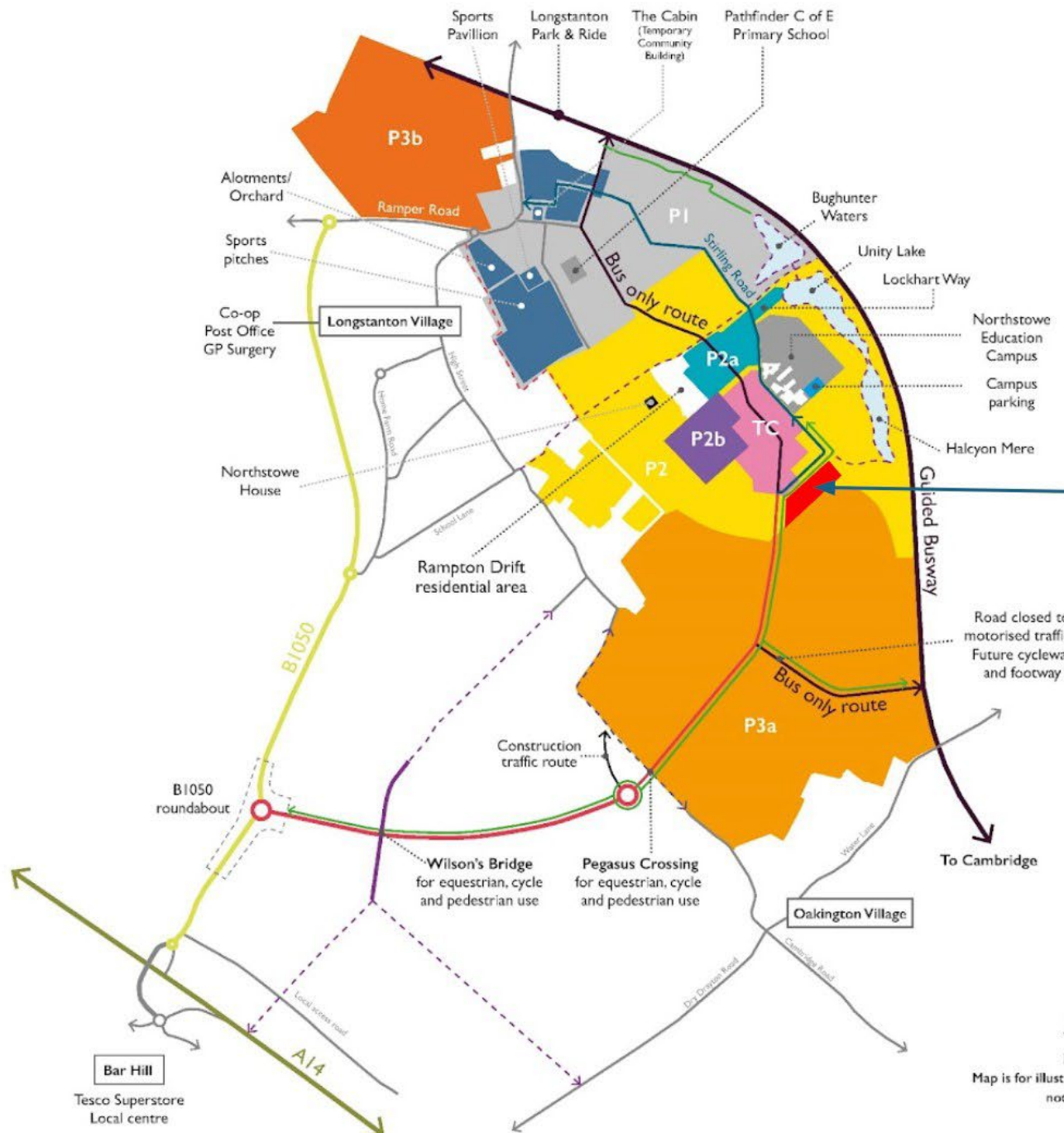
TOWNCOHOUSING.



MOLE ARCHITECTS

An award-winning architectural practice based in Cambridge, founded by Meredith Bowles in 1997.

Mole



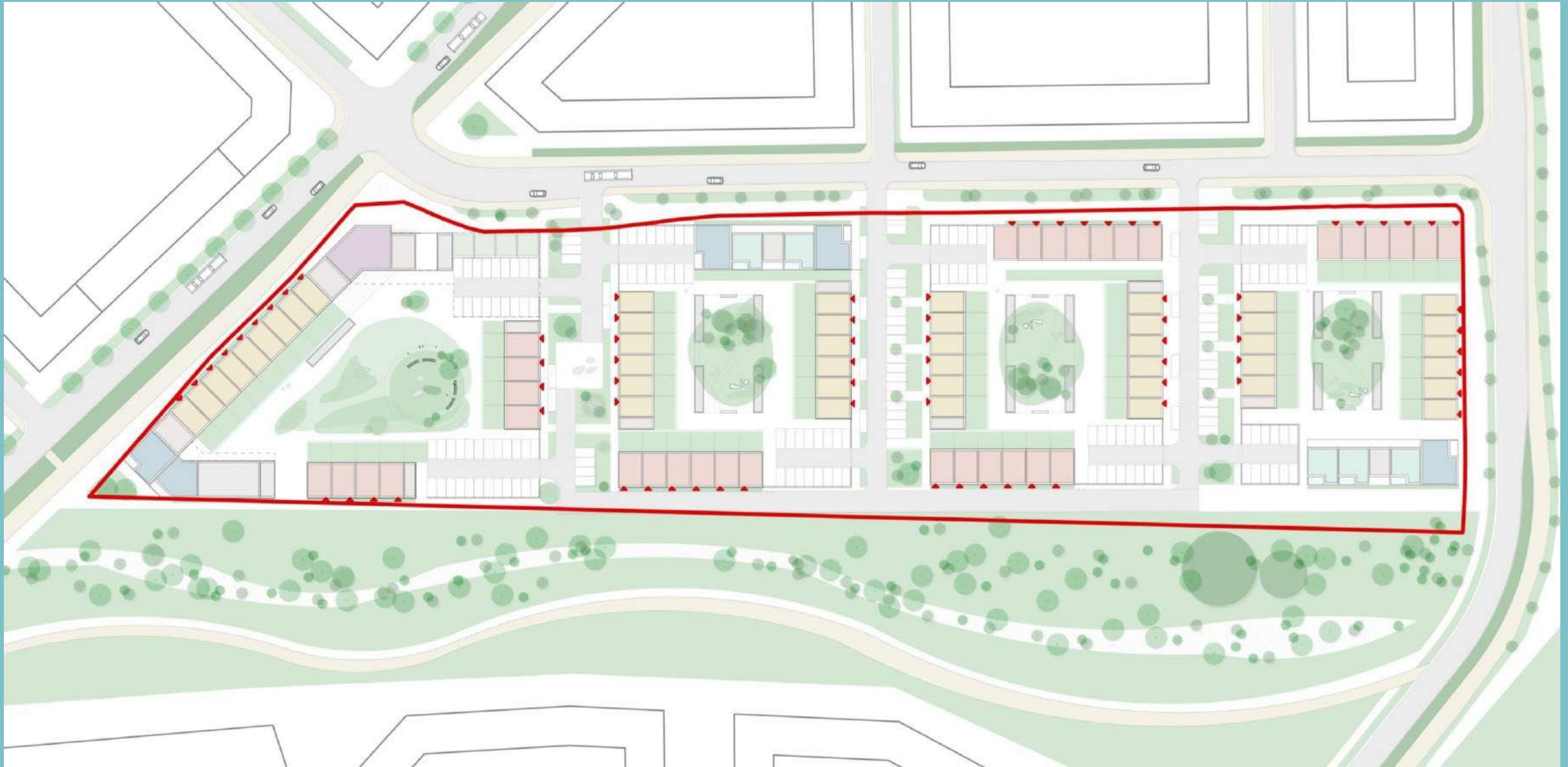
Town Cohousing
2D.1



Cohousing in Northstowe

THE CURRENT PLANS

- 2.8ha 'shovel-ready' parcel, with capacity for c130 homes
- Likely to be in 4 'blocks'
- One or more multi-generational cohousing communities
- Plus additional blocks
- Mix of market sale and Northstowe discounted value & outside of the cohousing blocks, affordable rental homes



INDICATIVE LAYOUT

TOWNCOHOUSING.

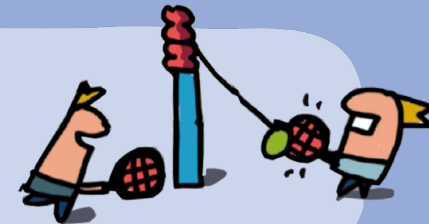


WHAT IS COHOUSING?

An intentional community that:

1. Blends private homes with shared spaces
2. Co-designed with residents
3. Designed for social interaction
4. Collectively managed by its residents
5. Part of wider community

11 NEW BUILD COHOUSING
SCHEMES IN THE UK



TOWNCOHOUSING.

KEY ASPECTS OF THE COHOUSING DESIGN



SHARED FACILITIES

Shared indoor and external spaces and facilities, including a Common House. These spaces and facilities will be identified and prioritized during the Brief-setting weekend but could include guest bedrooms, a tool share, and home-working spaces.

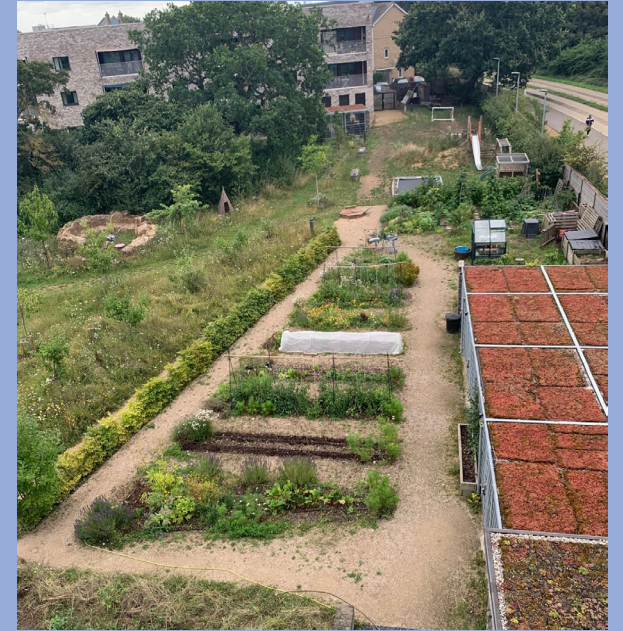
OPEN SPACES

Small private gardens or, for apartments, large balconies. Smaller private gardens and the careful location of car parking, enabling space to be created for a central shared garden.

PLAY STREETS

Play Streets offering safe sociable spaces for neighbours to socialise and children to play, supported by careful location of car parking spaces.

KEY DRIVERS OF COHOUSING DESIGN



COMMUNITY

Does it work socially?

CULTURE

Does it work for the culture we want?

CONSTRAINTS

Every site has opportunities & constraints.

CENTRIPETAL

Does the Common House draw people in?

CONTRIBUTION

How does it contribute to the wider neighbourhood?

ENERGY EFFICIENCY

Fabric first, clustered buildings.

ECOLOGY

Maximising greenspace.

ECONOMIC

Fewer unit types.

DEVELOPMENT TIMELINE



Codesign with future residents

Autumn 2024 –
Spring 2025



Planning application submitted

Spring 2025



Detailed design phase

Summer 2025



Construction stage

Autumn 2025



Move in

Summer 2027



NORTHSTOWE COHOUSING

- Register for next webinar 3rd October
- Join the Group
- Attend the brief-setting weekend
19/20th October
- Take part in the co-design process

TOWNCOHOUSING.





Suvana Cohousing

If you would like to live in an ethical and sustainable community, with independence, beauty and creativity, sharing resources, please join us.

ANY QUESTIONS?