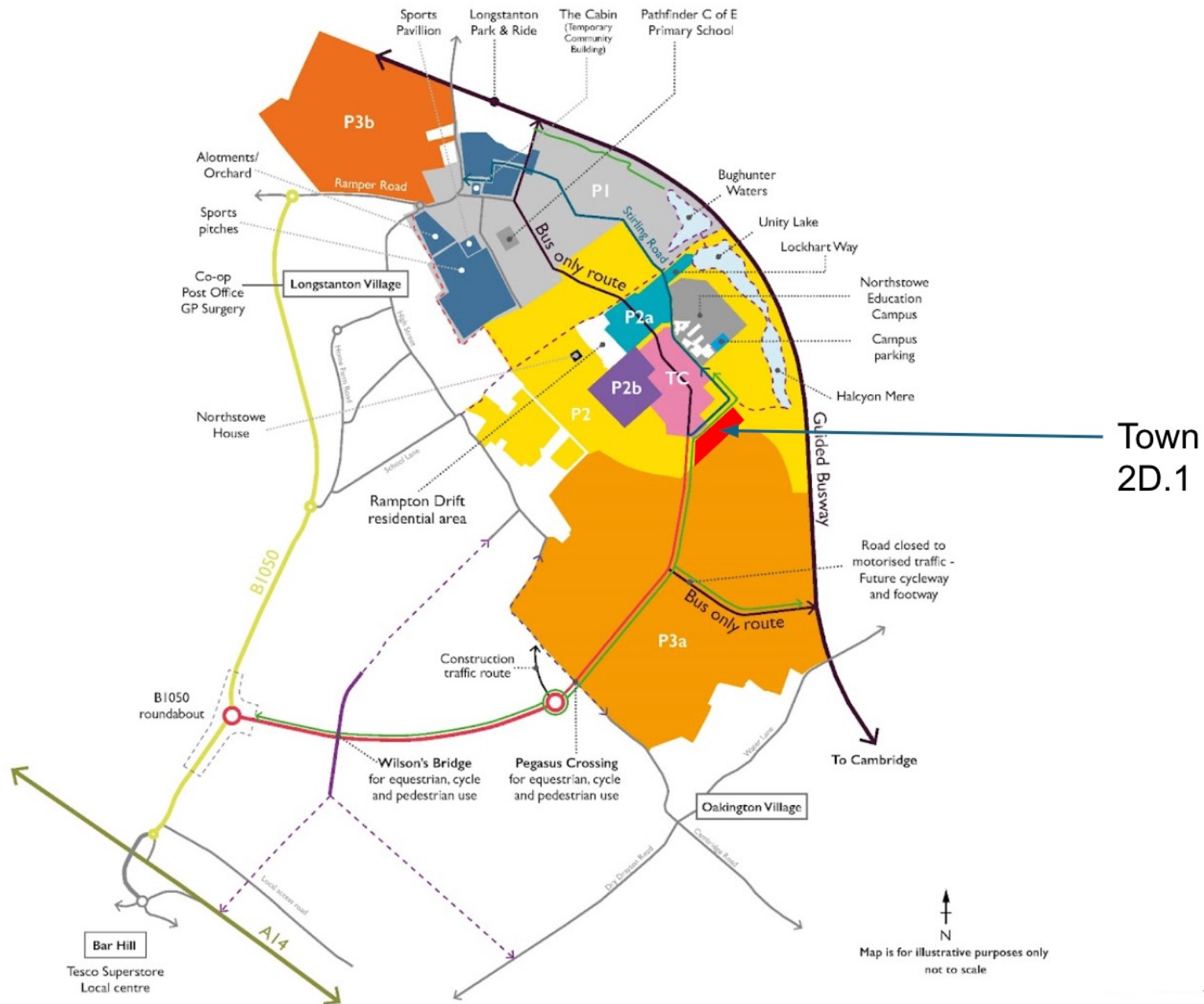


TOWN COHOUSING.

COHOUSING AT NORTHSTOWE

Northstowe Community Forum | June 2025





Town
2D.1

TOWN COHOUSING.

Masterplan

TOWN.



Building for a Healthy Life

Natural connections

- Edge to edge connectivity
- Follow desire lines
- Filtered permeability

Easy to find your way around

- Using streets for wayfinding
- Simple street pattern
- Different street design to aid legibility
- Frame views of features on or beyond the site
- Create legible elements within design

- 1 Continuous frontage to Greenway: the 'gaps' within the frontages amount to 35%
- 2 Continuous frontage to primary street and curved corner to area of town-wide importance
- 3 Tertiary streets making visual connections to Greenway and routes into town centre

- 4 Car-free lane providing distinctive green street
- 5 Cohousing blocks with large shared garden
- 6 Car parking for the cohousing is arranged in a series of corner car courts

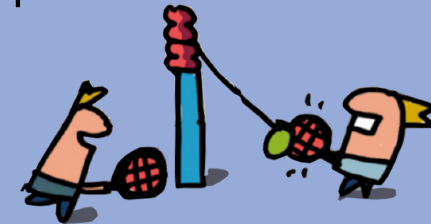
- 7 Car parking in a 'residential square' with play park
- 8 Parking in 'mews' street

TOWN COHOUSING.



WHAT IS COHOUSING?

- Cohousing offers a more connected, sustainable and convenient form of living where people occupy individual homes with additional shared spaces and facilities which they jointly manage and make use of with their neighbours.
- It's designed to encourage social connections and opportunities for collaboration.



TOWNCOHOUSING.

'INSIGHTS FROM MARMALADE LANE'

Covering the social, environmental and economic benefits of Marmalade Lane 5 years on



TOWNCOHOUSING.

AVAILABLE ON OUR WEBSITE

TOWNCOHOUSING.

THEMES



NEIGHBOURLINESS
AND BELONGING



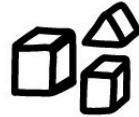
CONVENIENCE



CARBON, ENERGY
AND RESOURCES



LEARNING



CHILDHOOD



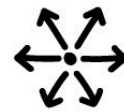
CONNECTION
TO NATURE



HEALTH AND
WELLBEING



COST OF
LIVING



WIDER
COMMUNITY
BENEFITS



NEIGHBOURLINESS AND BELONGING



The Common House

"MY FAVOURITE THING ABOUT MARMALADE LANE IS BEING ABLE TO HAVE A SOCIAL LIFE JUST A FEW STEPS FROM MY HOME AND BEING ABLE TO BE ALONE ALSO WHEN IT SUITS ME"

Residents cited the sense of community as being 'the best thing about living at Marmalade Lane'.



98%

OF RESIDENTS SAID THAT THEY REGULARLY STOP AND TALK TO PEOPLE IN THE NEIGHBOURHOOD



NEIGHBOURLINESS AND BELONGING

98% OF RESIDENTS SAID
THEY REGULARLY STOP
AND TALK WITH PEOPLE IN
THE NEIGHBOURHOOD

SOCIAL VALUE IN NUMBERS

£210,304

96% FEEL THEY COULD
GO TO A NEIGHBOUR
IF THEY NEED ADVICE

SOCIAL VALUE IN NUMBERS

£121,098



78% OF RESIDENTS ARE
ACTIVE IN TENANT
AND SOCIAL GROUPS

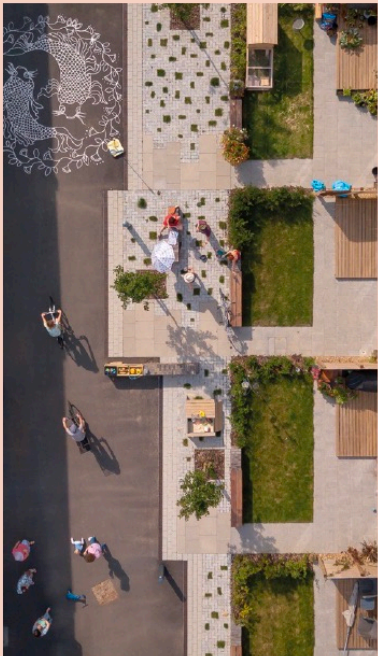
SOCIAL VALUE IN NUMBERS

£333,694



♥ HEALTH AND WELLBEING

Beyond the vital contributions to wellbeing that are offered by being part of a strong community, Marmalade Lane offers practical opportunities for healthier lifestyles.



78%

OF RESIDENTS HAVE REGULARLY PARTICIPATED IN PHYSICAL ACTIVITIES AT LEAST ONCE A WEEK FOR AT LEAST TWO MONTHS

which is higher than the percentage of adults who are physically active in the East of England region (68%) as of 2021



CONVENIENCE

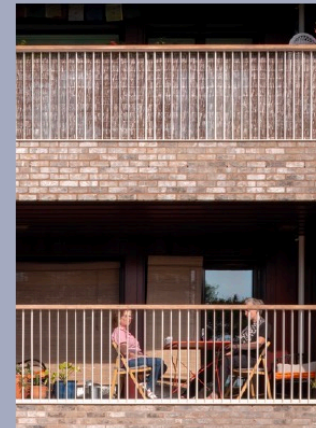
74%

OF RESIDENTS USE
THE COMMUNITY SHOP



Events, facilities, resources and services available within the community enhance the convenience of residents' daily lives.

"I THINK OF IT AS A ONE-MINUTE NEIGHBOURHOOD!"



90%

OF RESIDENTS
USED THE SHARED
LAUNDRY IN 2023



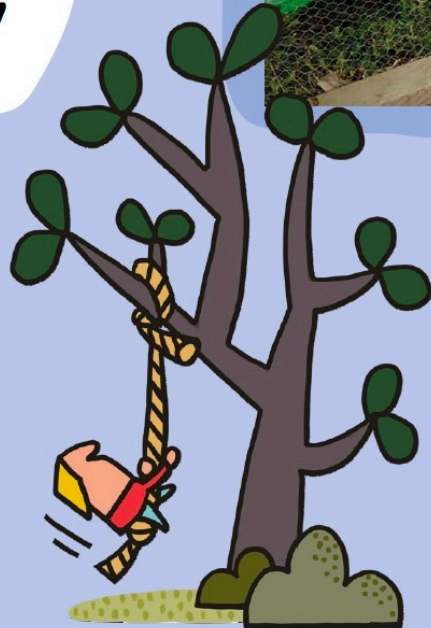


CHILDHOOD

"I NEVER PLAY IN MY OWN GARDEN. I CAN GET AWAY FROM MY BROTHERS AND SISTERS"



"WE PLAY HIDE AND SEEK IN THE BIKE SHEDS AND IN THE TREES"



"I LIKE PLAYING WITH ALL THE KIDS IN THE LANE... THERE ARE NO CARS"



COST OF LIVING

Homes at Marmalade Lane are designed to be cost-effective in operation, by using minimal energy.



THE CAR CLUB ALLOWS FOR THE COSTS OF CAR OWNERSHIP TO BE SHARED WITH NEIGHBOURS



76%
OF RESIDENTS
USED THE GUEST
BEDROOMS IN 2023

ALL RESIDENTS HAVE ACCESS TO A COMMUNITY-RUN SITEWIDE BROADBAND NETWORK



ANY QUESTIONS?



NORTHSTOWE COHOUSING

- [WeAreTown.co.uk/cohousing](https://www.WeAreTown.co.uk/cohousing)

SUVANA COHOUSING

- A cohousing community based on Buddhist values
- [Suvana.org](https://www.Suvana.org)

TOWN COHOUSING.



ANY QUESTIONS?