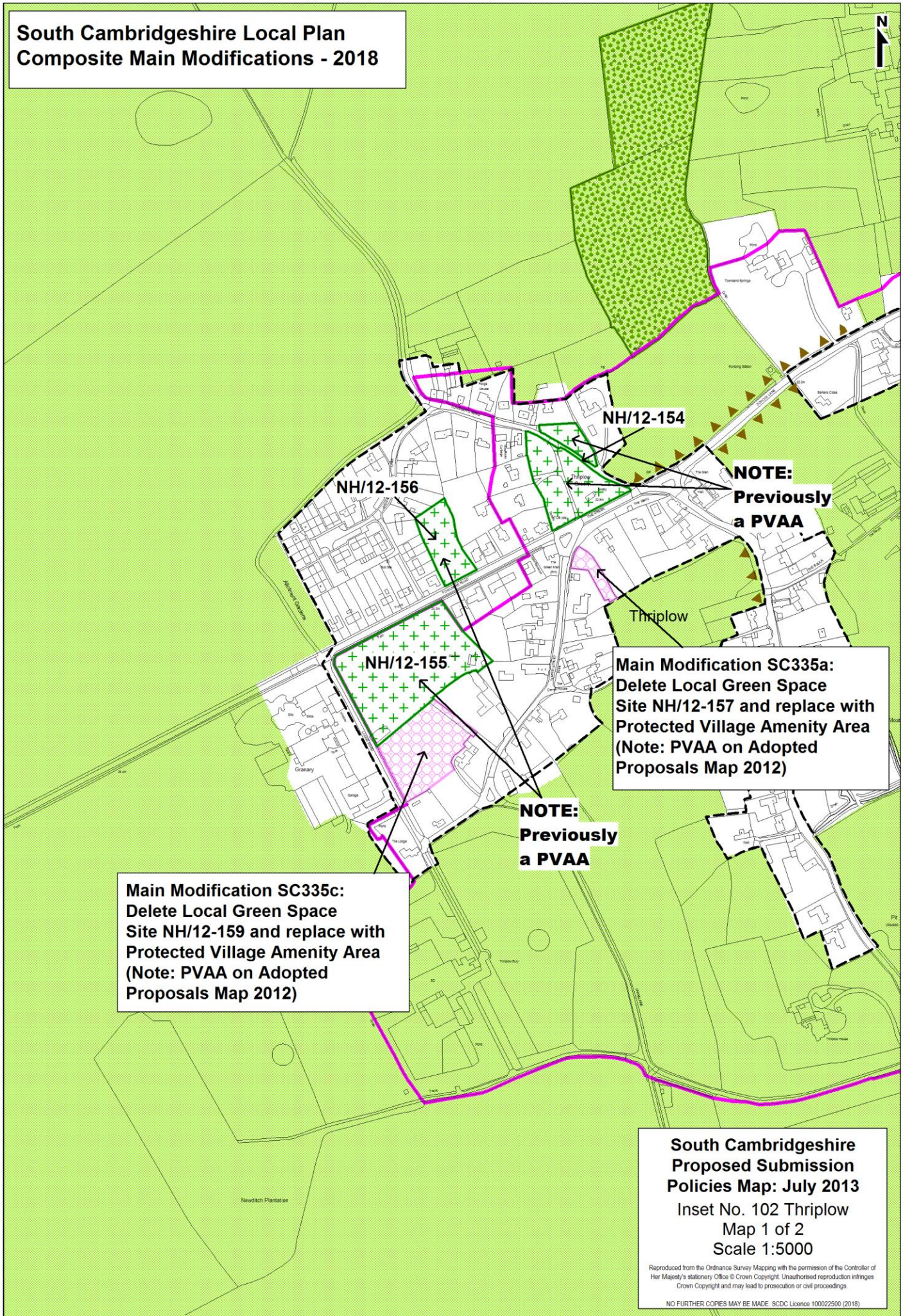


**South Cambridgeshire Local Plan
Composite Main Modifications - 2018**



NH/12-156

NH/12-154

NH/12-155

Thriplow

**NOTE:
Previously
a PVAA**

**Main Modification SC335a:
Delete Local Green Space
Site NH/12-157 and replace with
Protected Village Amenity Area
(Note: PVAA on Adopted
Proposals Map 2012)**

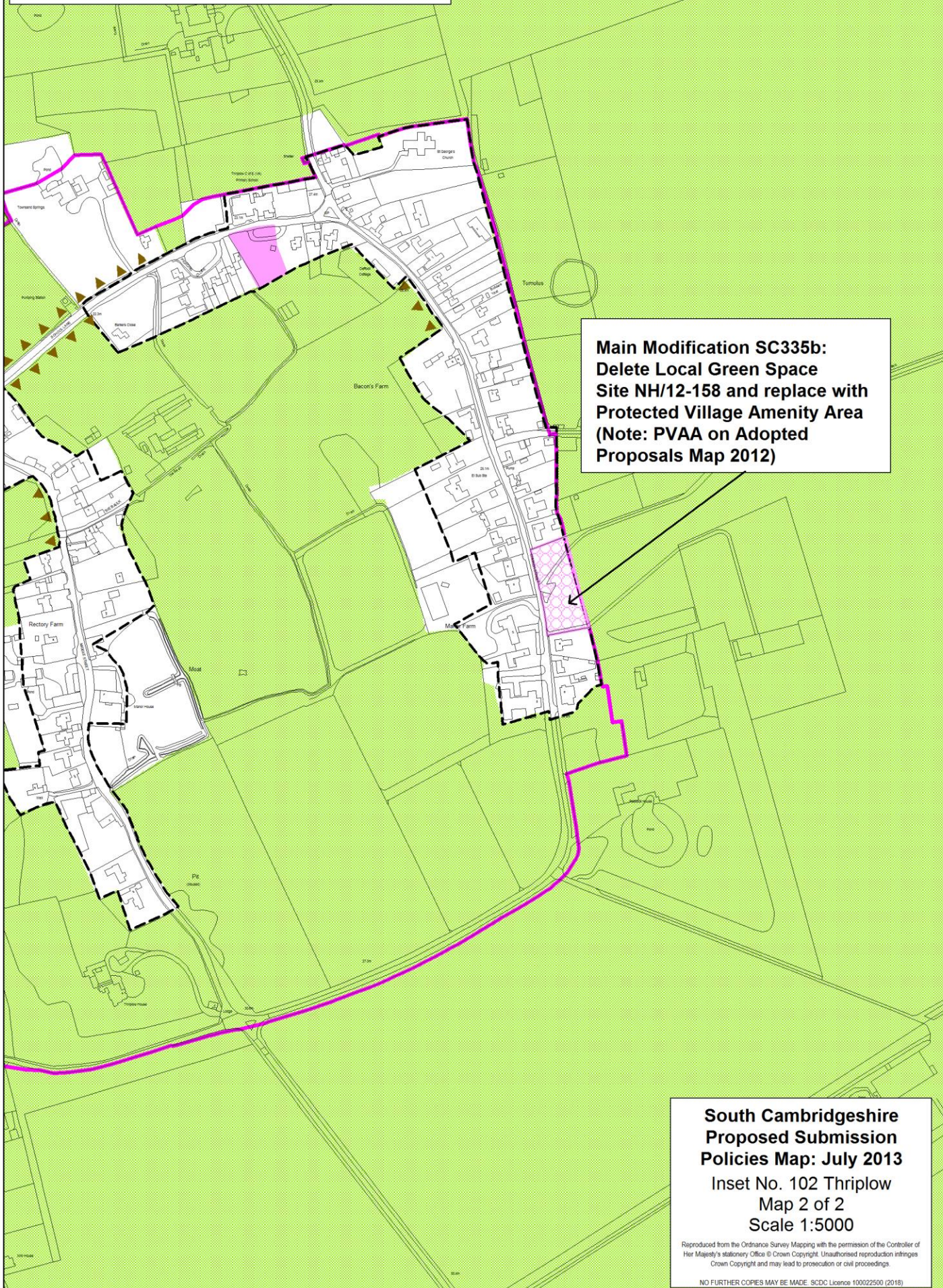
**NOTE:
Previously
a PVAA**

**Main Modification SC335c:
Delete Local Green Space
Site NH/12-159 and replace with
Protected Village Amenity Area
(Note: PVAA on Adopted
Proposals Map 2012)**

**South Cambridgeshire
Proposed Submission
Policies Map: July 2013**
Inset No. 102 Thriplow
Map 1 of 2
Scale 1:5000

Reproduced from the Ordnance Survey Mapping with the permission of the Controller of Her Majesty's Stationery Office © Crown Copyright. Unauthorised reproduction infringes Crown Copyright and may lead to prosecution or civil proceedings.
NO FURTHER COPIES MAY BE MADE. SDCD Licence 100022500 (2018)

**South Cambridgeshire Local Plan
Composite Main Modifications - 2018**



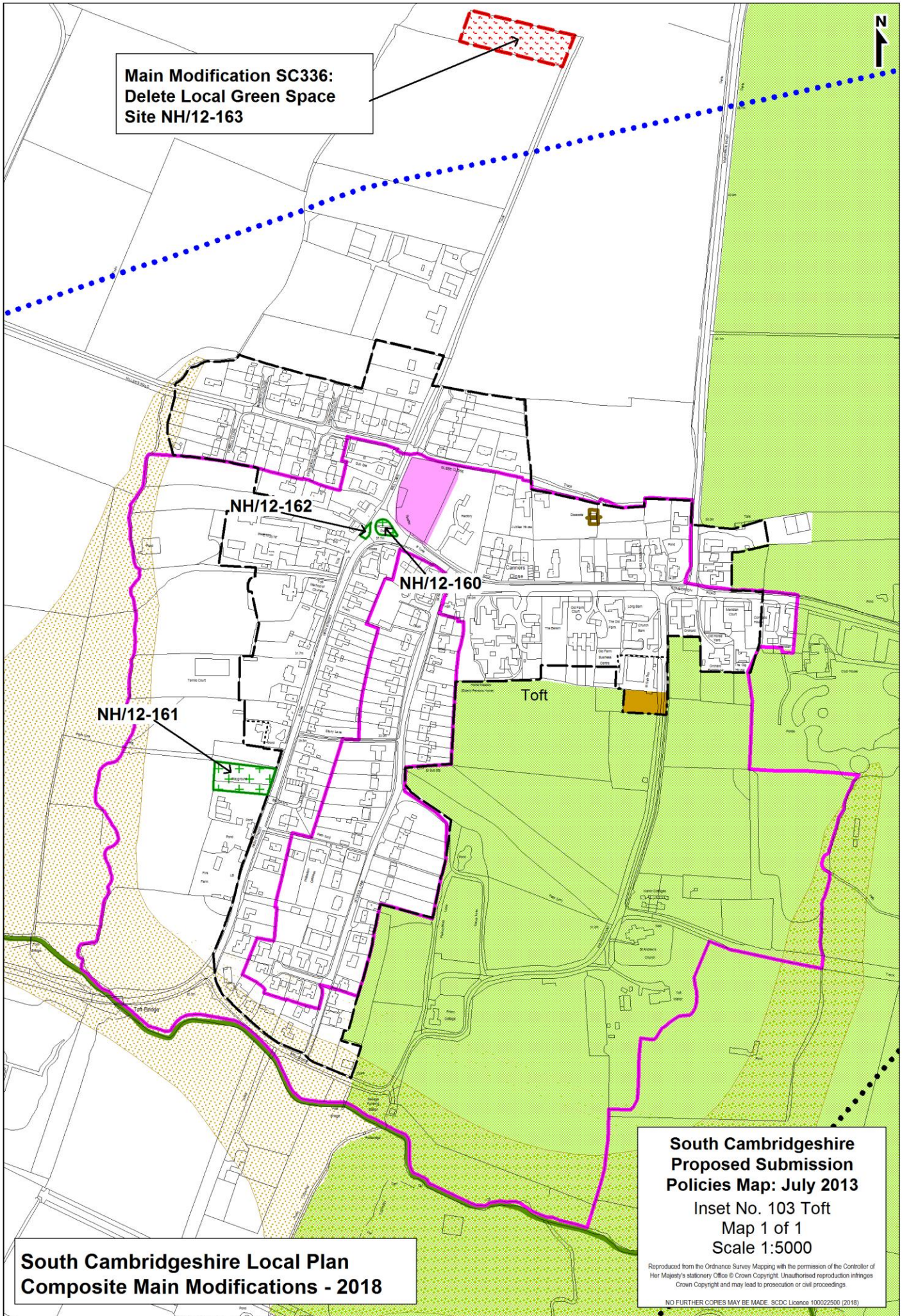
**Main Modification SC335b:
Delete Local Green Space
Site NH/12-158 and replace with
Protected Village Amenity Area
(Note: PVAA on Adopted
Proposals Map 2012)**

**South Cambridgeshire
Proposed Submission
Policies Map: July 2013**

Inset No. 102 Thriplow
Map 2 of 2
Scale 1:5000

Reproduced from the Ordnance Survey Mapping with the permission of the Controller of Her Majesty's Stationery Office © Crown Copyright. Unauthorised reproduction infringes Crown Copyright and may lead to prosecution or civil proceedings.

NO FURTHER COPIES MAY BE MADE. SDC Licence 100022500 (2018)



**Main Modification SC336:
Delete Local Green Space
Site NH/12-163**

NH/12-162

NH/12-160

NH/12-161

Toft

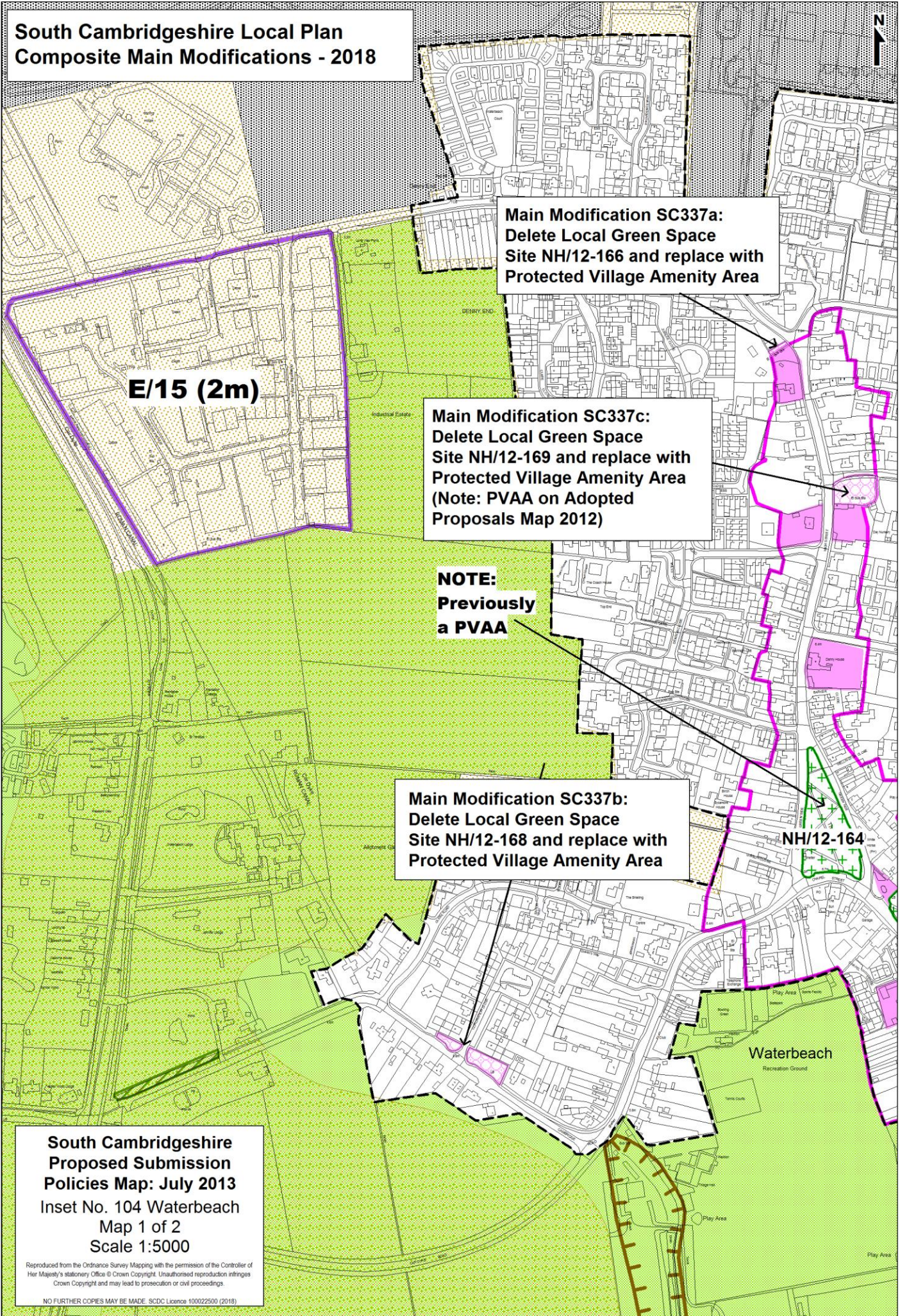
**South Cambridgeshire
Proposed Submission
Policies Map: July 2013**
Inset No. 103 Toft
Map 1 of 1
Scale 1:5000

**South Cambridgeshire Local Plan
Composite Main Modifications - 2018**

Reproduced from the Ordnance Survey Mapping with the permission of the Controller of Her Majesty's Stationery Office © Crown Copyright. Unauthorised reproduction infringes Crown Copyright and may lead to prosecution or civil proceedings.

NO FURTHER COPIES MAY BE MADE. SDCD Licence 100022500 (2018)

**South Cambridgeshire Local Plan
Composite Main Modifications - 2018**



Main Modification SC337a:
Delete Local Green Space
Site NH/12-166 and replace with
Protected Village Amenity Area

Main Modification SC337c:
Delete Local Green Space
Site NH/12-169 and replace with
Protected Village Amenity Area
(Note: PVAA on Adopted
Proposals Map 2012)

NOTE:
Previously
a PVAA

Main Modification SC337b:
Delete Local Green Space
Site NH/12-168 and replace with
Protected Village Amenity Area

NH/12-164

Waterbeach
Recreation Ground

**South Cambridgeshire
Proposed Submission
Policies Map: July 2013**
Inset No. 104 Waterbeach
Map 1 of 2
Scale 1:5000

Reproduced from the Ordnance Survey Mapping with the permission of the Controller of Her Majesty's Stationery Office © Crown Copyright. Unauthorised reproduction infringes Crown Copyright and may lead to prosecution or civil proceedings.

NO FURTHER COPIES MAY BE MADE. SCDC Licence 100022500 (2018)

**South Cambridgeshire Local Plan
Composite Main Modifications - 2018**

**Main Modification SC337a:
Delete Local Green Space
Site NH/12-166 and replace with
Protected Village Amenity Area**

**Main Modification SC337d:
Delete the Green Belt
designation from land north
of Bannold Road**

**Main Modification SC337c:
Delete Local Green Space
Site NH/12-169 and replace with
Protected Village Amenity Area
(Note: PVAA on Adopted
Proposals Map 2012)**

**NOTE:
Previously
a PVAA**

NH/12-164

NH/12-165

Waterbeach
Recreation Ground

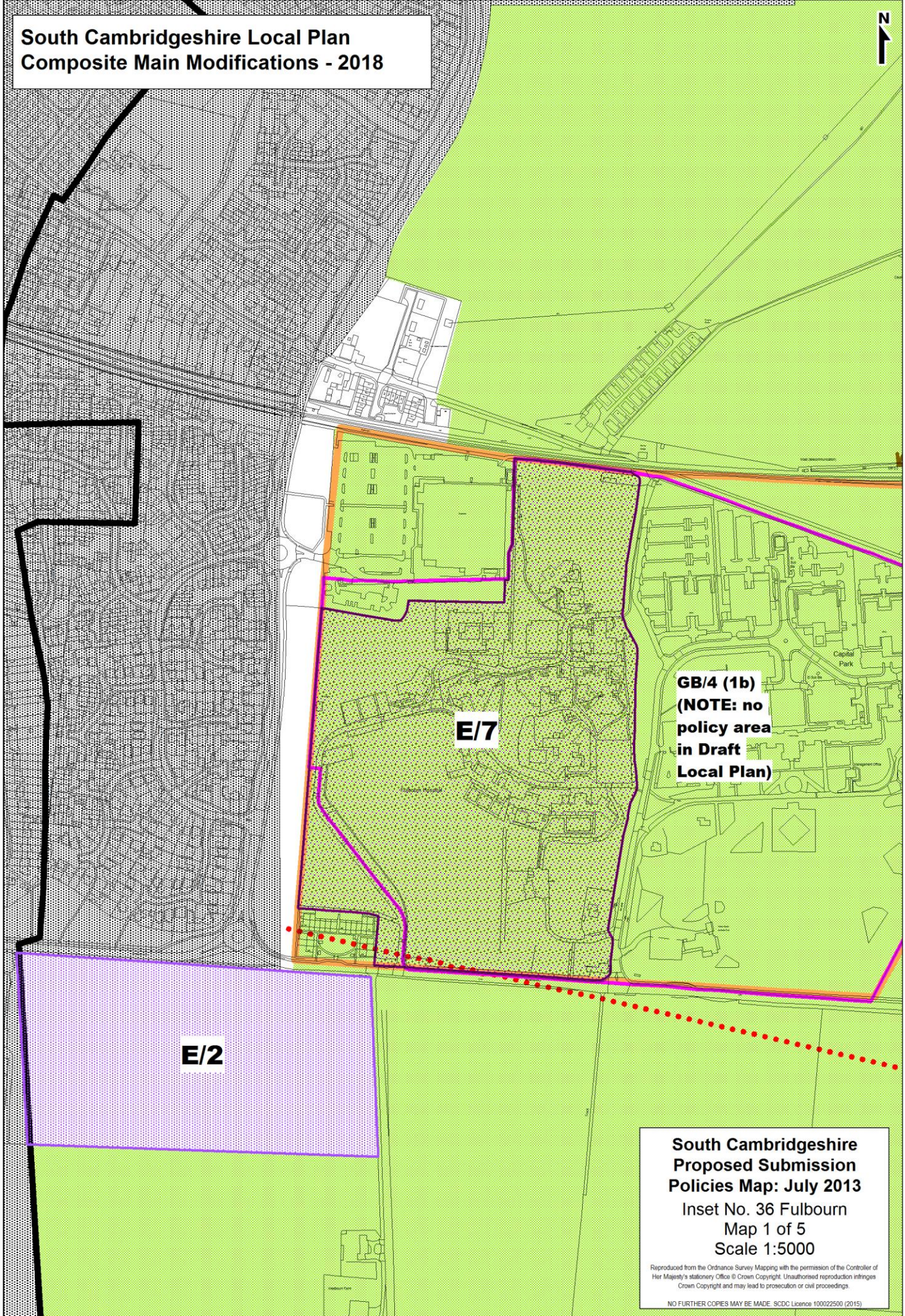
**South Cambridgeshire
Proposed Submission
Policies Map: July 2013
Inset No. 104 Waterbeach
Map 2 of 2
Scale 1:5000**

Reproduced from the Ordnance Survey Mapping with the permission of the Controller of Her Majesty's Stationery Office © Crown Copyright. Unauthorised reproduction infringes Crown Copyright and may lead to prosecution or civil proceedings.

NO FURTHER COPIES MAY BE MADE. SDC Licence 100022500 (2018)

Appendix 1

**South Cambridgeshire Local Plan
Composite Main Modifications - 2018**



**GB/4 (1b)
(NOTE: no
policy area
in Draft
Local Plan)**

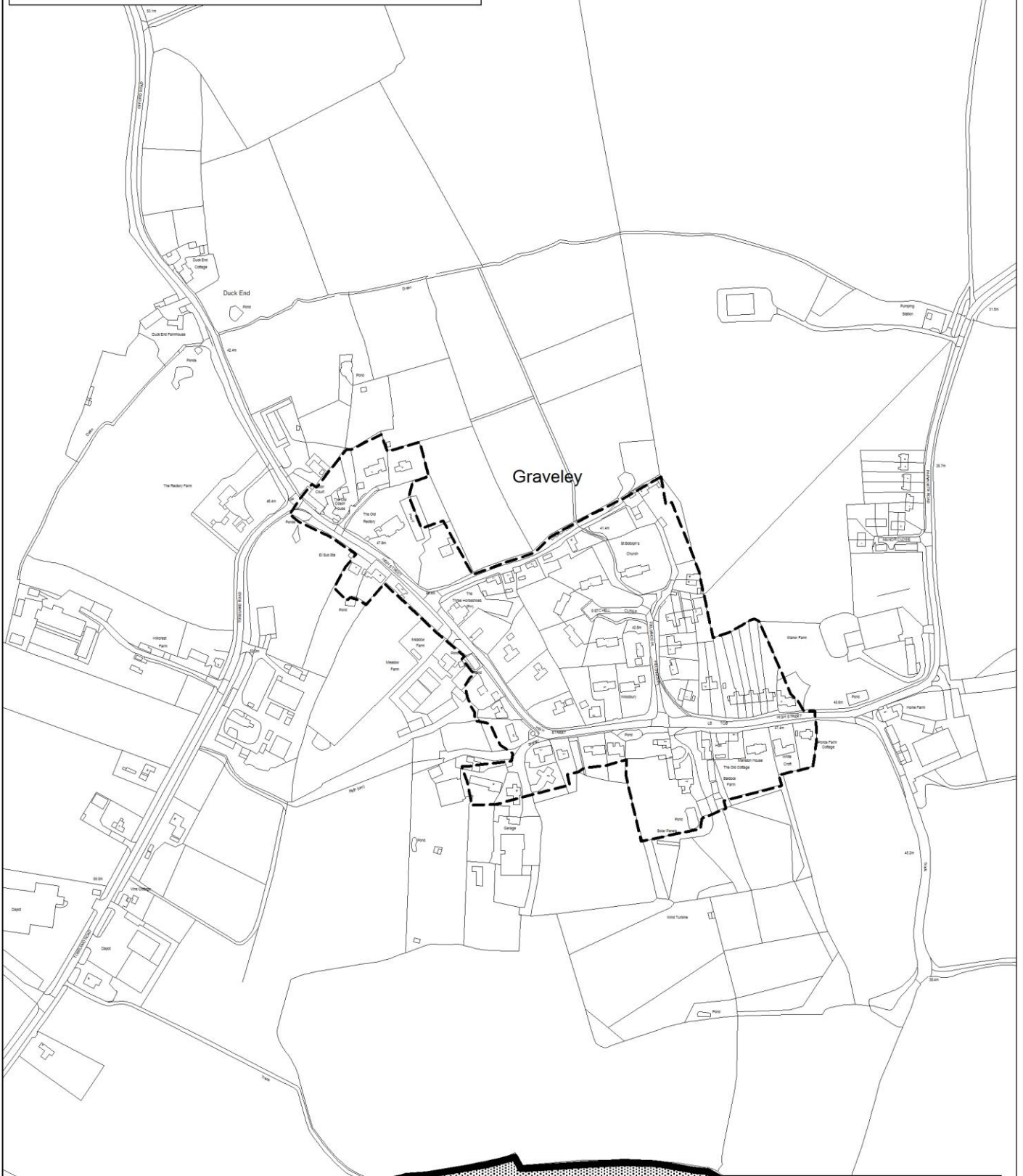
E/2

E/7

**South Cambridgeshire
Proposed Submission
Policies Map: July 2013**
Inset No. 36 Fulbourn
Map 1 of 5
Scale 1:5000

Reproduced from the Ordnance Survey Mapping with the permission of the Controller of Her Majesty's Stationery Office © Crown Copyright. Unauthorised reproduction infringes Crown Copyright and may lead to prosecution or civil proceedings.
NO FURTHER COPIES MAY BE MADE. SDCD Licence 100022500 (2015)

**South Cambridgeshire Local Plan
Composite Main Modifications - 2018**



**South Cambridgeshire
Proposed Submission
Policies Map: July 2013**

Inset No. 40 Graveley
Map 1 of 1
Scale 1:5000

Reproduced from the Ordnance Survey Mapping with the permission of the Controller of Her Majesty's Stationery Office © Crown Copyright. Unauthorised reproduction infringes Crown Copyright and may lead to prosecution or civil proceedings.

NO FURTHER COPIES MAY BE MADE. SCDC Licence 100022500 (2015)

**South Cambridgeshire Local Plan
Composite Main Modifications - 2018**



**Main Modification SC314b:
Delete Local Green Space site
NH/12-104 and replace with
Protected Village Amenity Area,
with an amended boundary.**

Little Abington

NH/12-103

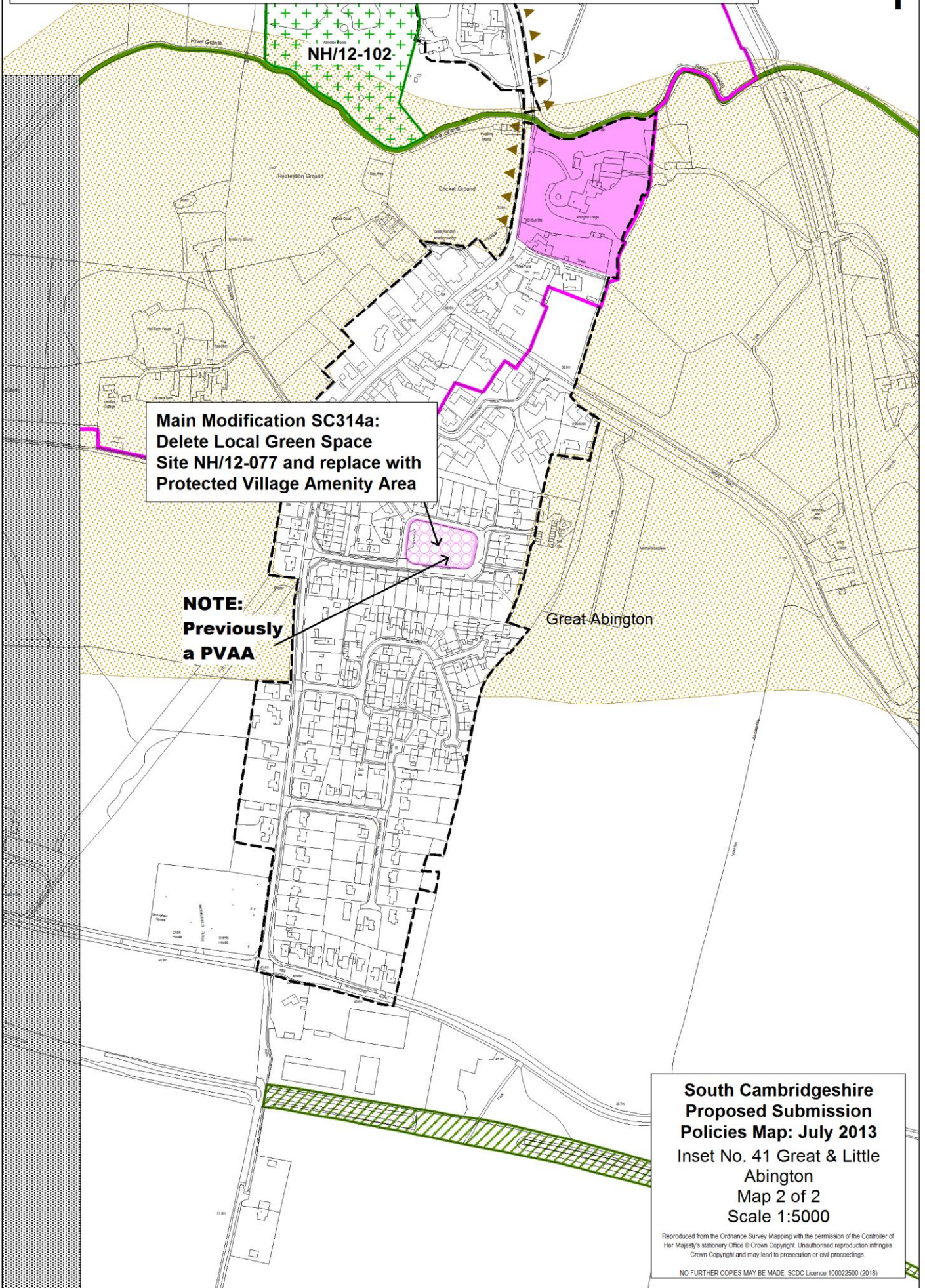
NH/12-102

**South Cambridgeshire
Proposed Submission
Policies Map: July 2013
Inset No. 41 Great & Little
Abington
Map 1 of 2
Scale 1:5000**

Reproduced from the Ordnance Survey Mapping with the permission of the Controller of Her Majesty's Stationery Office © Crown Copyright. Unauthorised reproduction infringes Crown Copyright and may lead to prosecution or civil proceedings.

NO FURTHER COPIES MAY BE MADE. SDC Licence 100022500 (2018)

South Cambridgeshire Local Plan Composite Main Modifications - 2018



**Main Modification SC314a:
Delete Local Green Space
Site NH/12-077 and replace with
Protected Village Amenity Area**

**NOTE:
Previously
a PVAA**

**South Cambridgeshire
Proposed Submission
Policies Map: July 2013
Inset No. 41 Great & Little
Abington
Map 2 of 2
Scale 1:5000**

Reproduced from the Ordnance Survey Mapping with the permission of the Controller of Her Majesty's Stationery Office © Crown Copyright. Unauthorised reproduction infringes Crown Copyright and may lead to prosecution or civil proceedings.

NO FURTHER COPIES MAY BE MADE. SDCD Licence 100022500 (2018)

